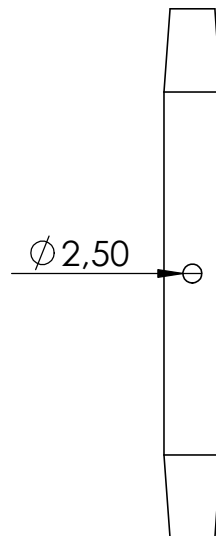
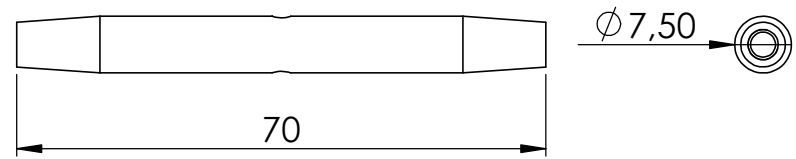
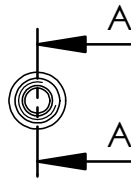
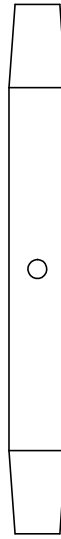
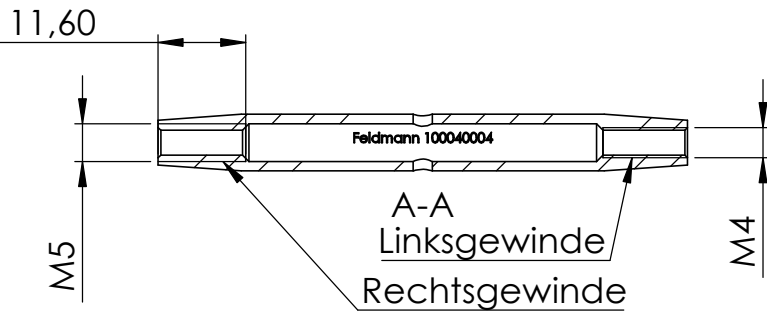

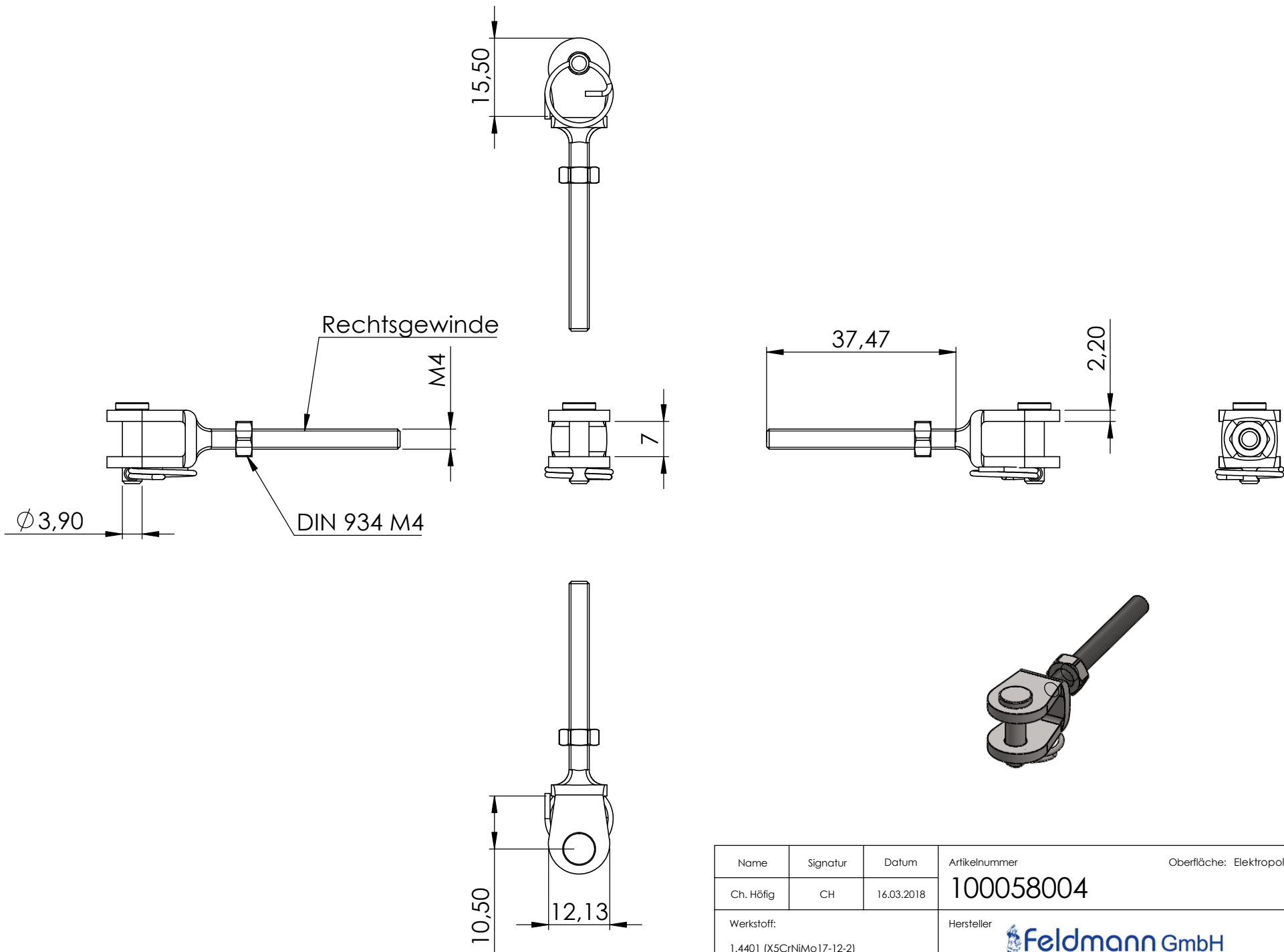


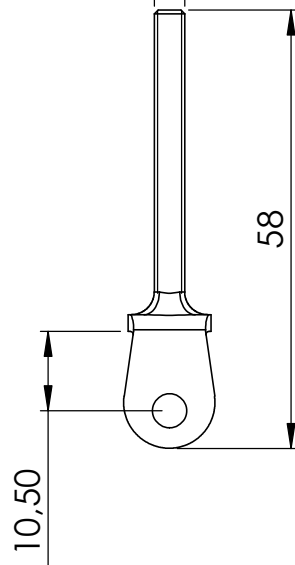
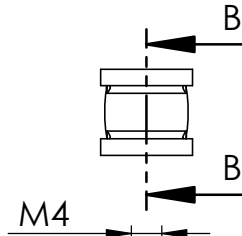
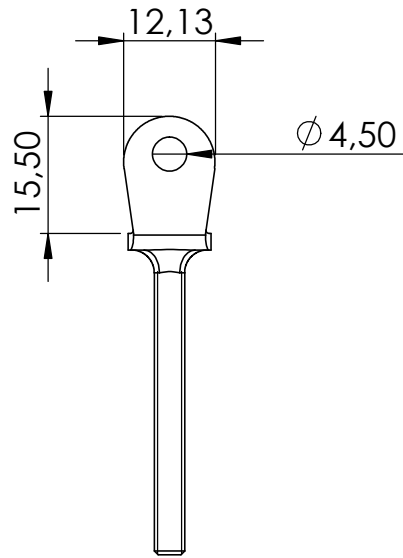
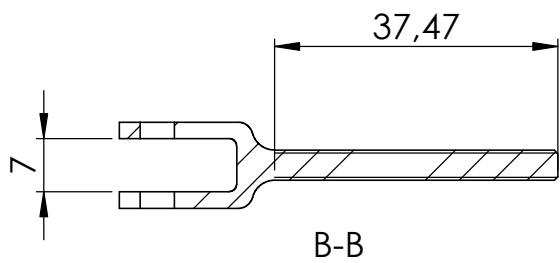
Name	Signatur	Datum	Artikelnummer	Oberfläche: Elektropoliert
Ch. Höfig	CH	16.03.2018	<b>100040004</b>	
Werkstoff: 1.4401 (X5CrNiMo17-12-2)			Hersteller  Qualitätsprodukte aus Edelstahl, Stahl und Schmiedeeisen	Blattformat <b>A4</b>
Gewicht 0,043 kg			Massstab: 1:2	Blatt 1 von 14



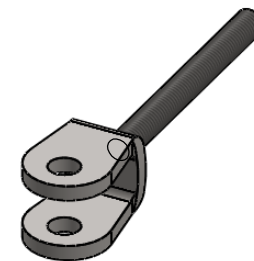
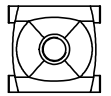
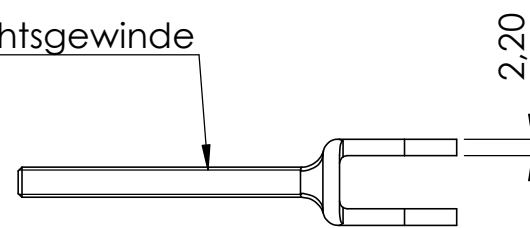
Name	Signatur	Datum	Artikelnummer	Oberfläche: Elektropoliert
Ch. Höfig	CH	16.03.2018	100040004 Teil1	
Werkstoff: 1.4401 (X5CrNiMo17-12-2)			Hersteller  Qualitätsprodukte aus Edelstahl, Stahl und Schmiedeeisen	Blattformat A4
Gewicht 0,014 kg			Massstab: 1:1	Blatt 2 von 14



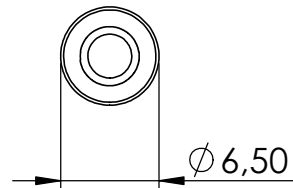
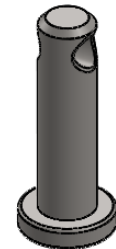
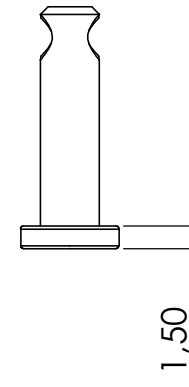
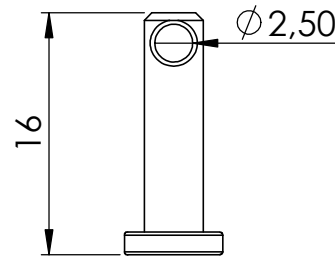
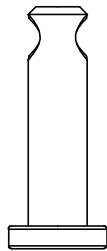
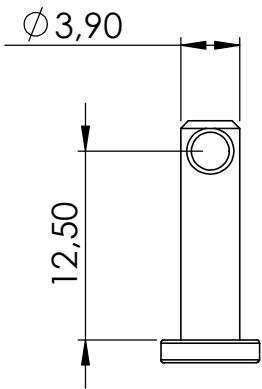
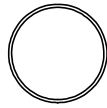
Name	Signatur	Datum	Artikelnummer	Oberfläche: Elektropoliert
Ch. Höfig	CH	16.03.2018	100058004	
Werkstoff: 1.4401 (X5CrNiMo17-12-2)			Hersteller  Qualitätsprodukte aus Edelstahl, Stahl und Schmiedeeisen	Blattformat A4
Gewicht 0,014 kg			Massstab: 1:1	Blatt 3 von 14



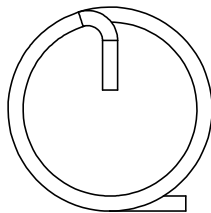
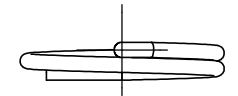
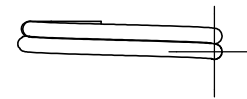
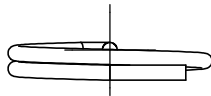
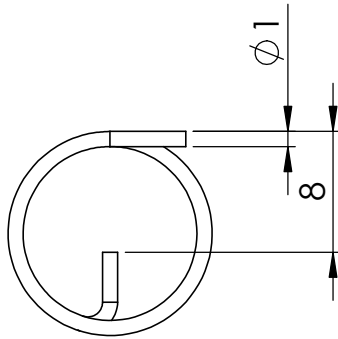
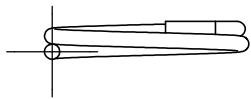
Rechtsgewinde




Name	Signatur	Datum	Artikelnummer	Oberfläche: Elektropoliert
Ch. Höfig	CH	16.03.2018	100040004 Teil2	
Werkstoff: 1.4401 (X5CrNiMo17-12-2)			Hersteller  Qualitätsprodukte aus Edelstahl, Stahl und Schmiedeeisen	Blattformat A4
Gewicht 0,011 kg			Massstab: 1:1	Blatt 4 von 14

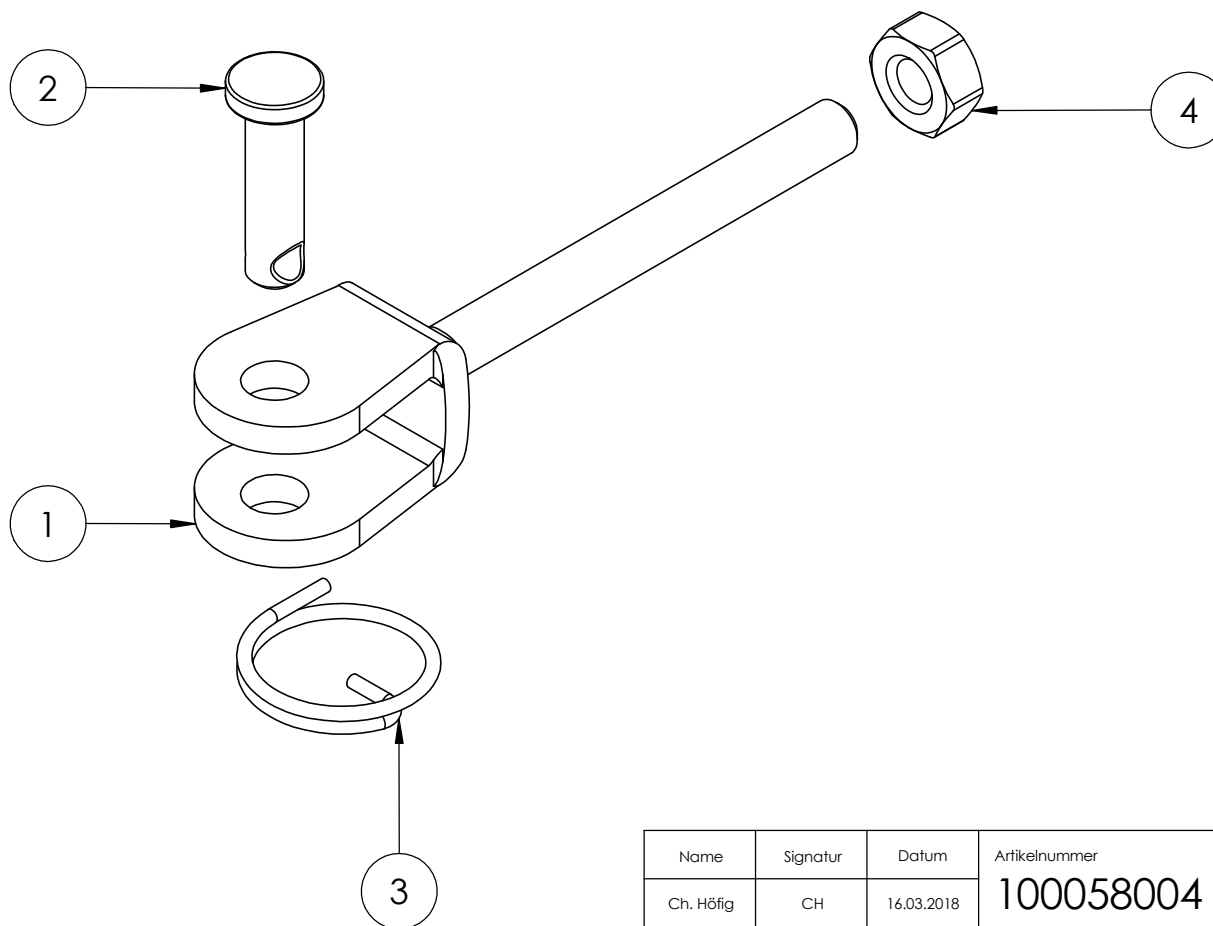


Name	Signatur	Datum	Artikelnummer	Oberfläche: Roh
Ch. Höfig	CH	16.03.2018	100040004 Teil3	
Werkstoff: 1.4401 (X5CrNiMo17-12-2)		Hersteller  Qualitätsprodukte aus Edelstahl, Stahl und Schmiedeeisen		Blattformat A4
Gewicht 0,002 kg		Massstab: 2:1		Blatt 5 von 14

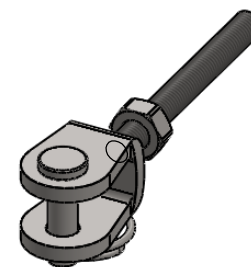
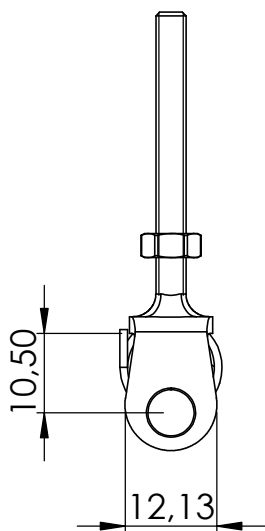
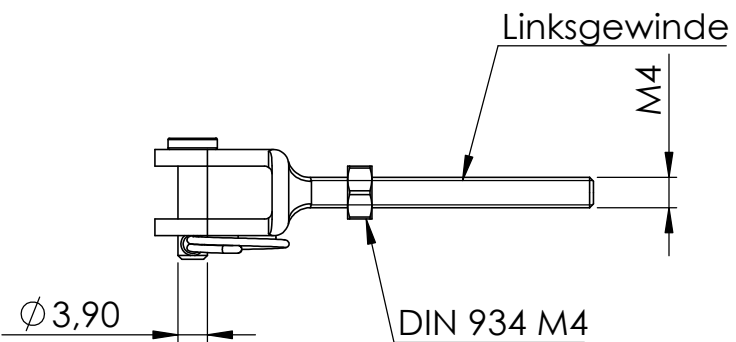
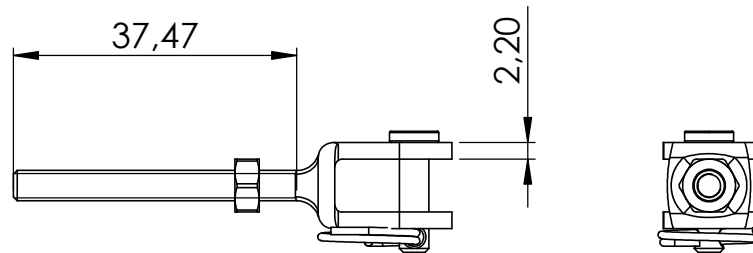
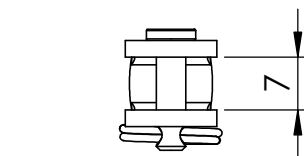
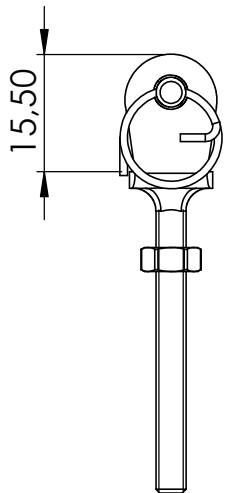


Name	Signatur	Datum	Artikelnummer	Oberfläche: Elektropoliert
Ch. Höfig	CH	16.03.2018	100040004 Teil4	
Werkstoff: 1.4401 (X5CrNiMo17-12-2)			Hersteller	Blattformat
			 Feldmann GmbH Qualitätsprodukte aus Edelstahl, Stahl und Schmiedeeisen	A4
Gewicht 0,000 kg			Massstab: 2:1	Blatt 6 von 14

POS-NR.	BENENNUNG	MENGE
1	100058004 Teil1	1
2	100058004 Teil2	1
3	100059004 Teil2	1
4	58321-240-4	1

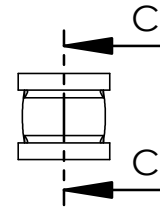
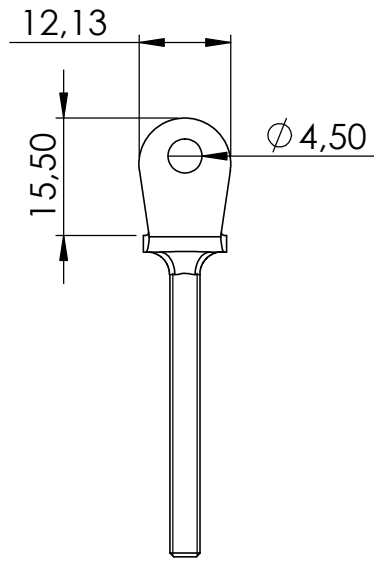
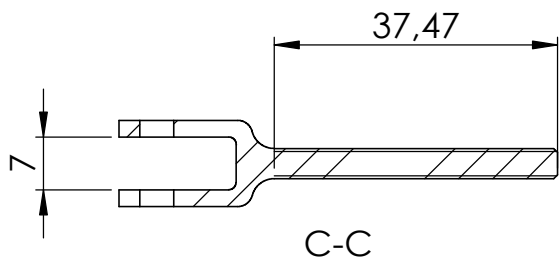


Name	Signatur	Datum	Artikelnummer	Oberfläche: Elektropoliert
Ch. Höfig	CH	16.03.2018	<b>100058004</b>	
Werkstoff: 1.4401 (X5CrNiMo17-12-2)		Hersteller  Qualitätsprodukte aus Edelstahl, Stahl und Schmiedeeisen		Blattformat <b>A4</b>
Gewicht 0,014 kg		Massstab: 2:1		Blatt 7 von 14

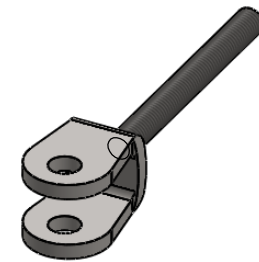
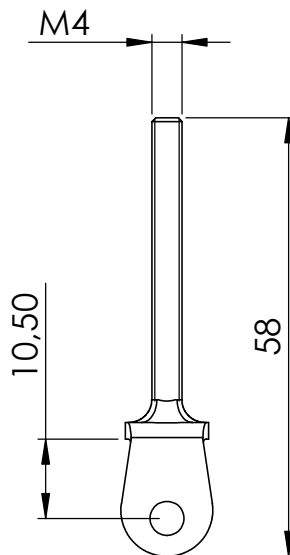
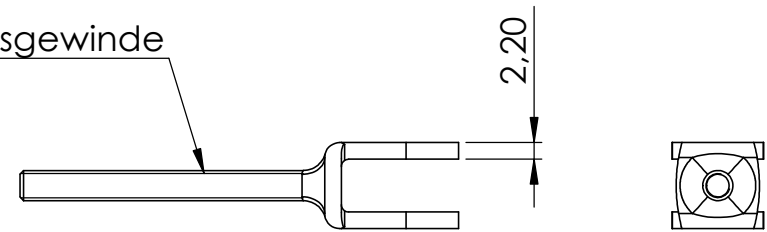


Name	Signatur	Datum	Artikelnummer	Oberfläche: Elektropoliert
Ch. Höfig	CH	16.03.2018	100059004	
Werkstoff:		Hersteller		Blattformat
1.4401 (X5CrNiMo17-12-2)		 Qualitätsprodukte aus Edelstahl, Stahl und Schmiedeeisen		A4
Gewicht 0,014 kg		Massstab: 1:1		Blatt 8 von 14

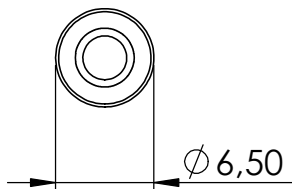
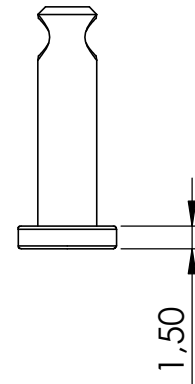
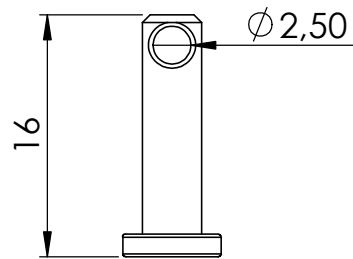
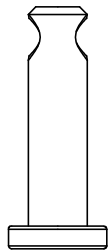
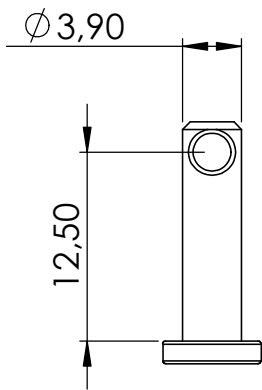
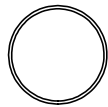





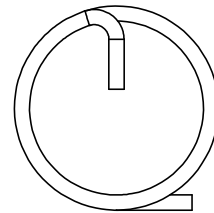
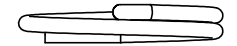
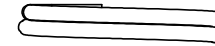
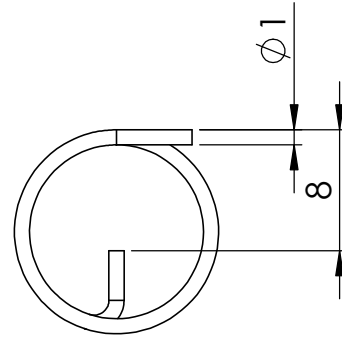
Linksgewinde




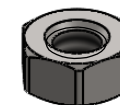
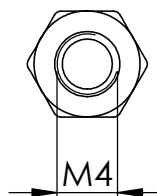
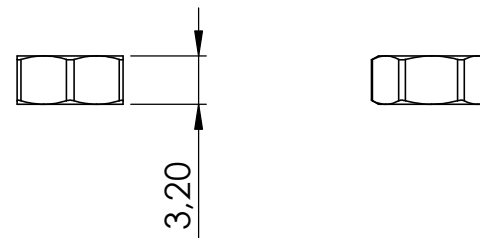
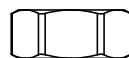
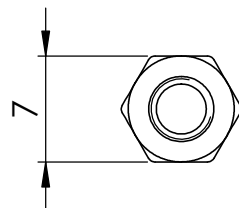
Name	Signatur	Datum	Artikelnummer	Oberfläche: Elektropoliert
Ch. Höfig	CH	16.03.2018	100059004 Teil1	
Werkstoff: 1.4401 (X5CrNiMo17-12-2)			Hersteller	Blattformat
			 Feldmann GmbH Qualitätsprodukte aus Edelstahl, Stahl und Schmiedeeisen	A4
Gewicht 0,011 kg		Massstab: 1:1		Blatt 9 von 14



Name	Signatur	Datum	Artikelnummer	Oberfläche: Roh
Ch. Höfig	CH	16.03.2018	100059004 Teil2	
Werkstoff: 1.4401 (X5CrNiMo17-12-2)			Hersteller  Qualitätsprodukte aus Edelstahl, Stahl und Schmiedeeisen	Blattformat A4
Gewicht 0,002 kg		Massstab: 2:1	Blatt 10 von 14	

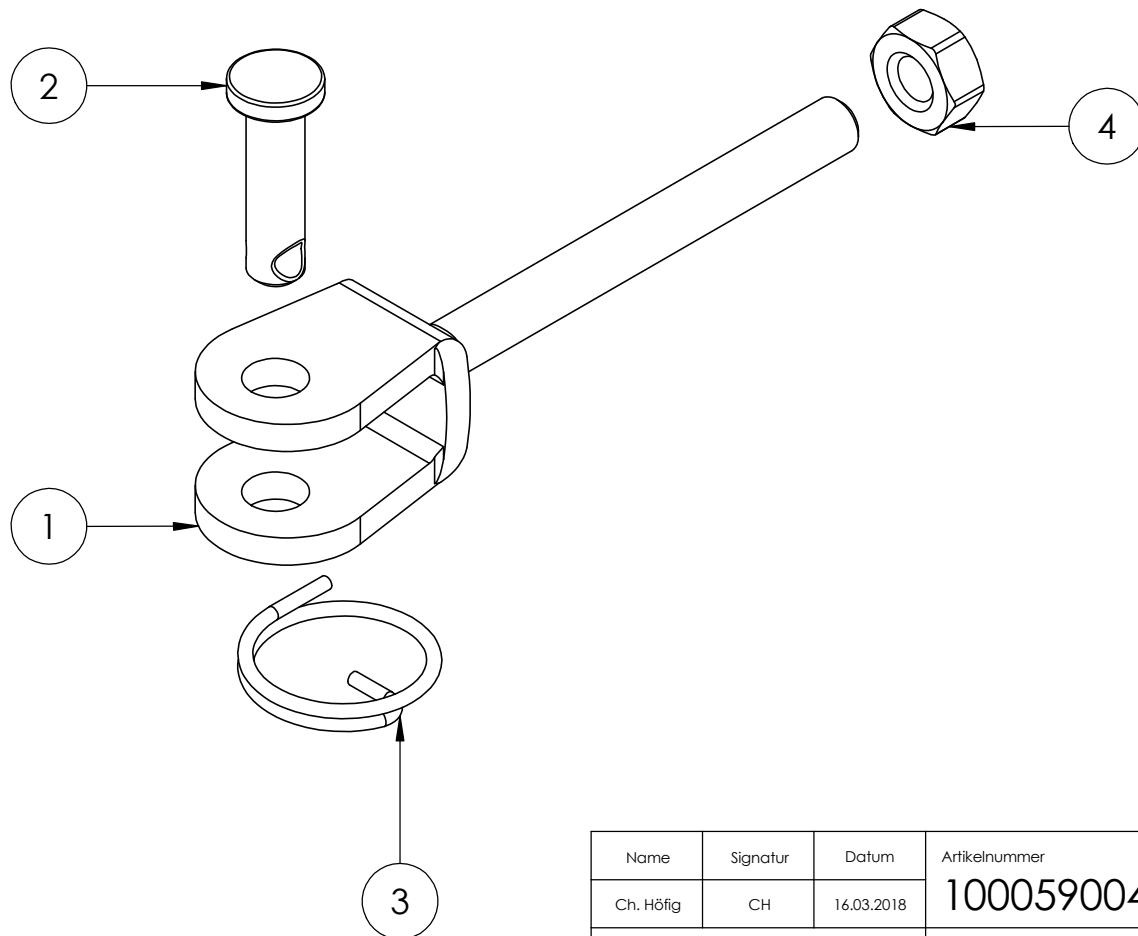


Name	Signatur	Datum	Artikelnummer	Oberfläche: Elektropoliert
Ch. Höfig	CH	16.03.2018	100059004 Teil2	
Werkstoff: 1.4401 (X5CrNiMo17-12-2)			Hersteller	Blattformat
			 <small>Qualitätsprodukte aus Edelstahl, Stahl und Schmiedeeisen</small>	
Gewicht 0,000 kg			Massstab: 2:1	Blatt 11 von 14
			A4	



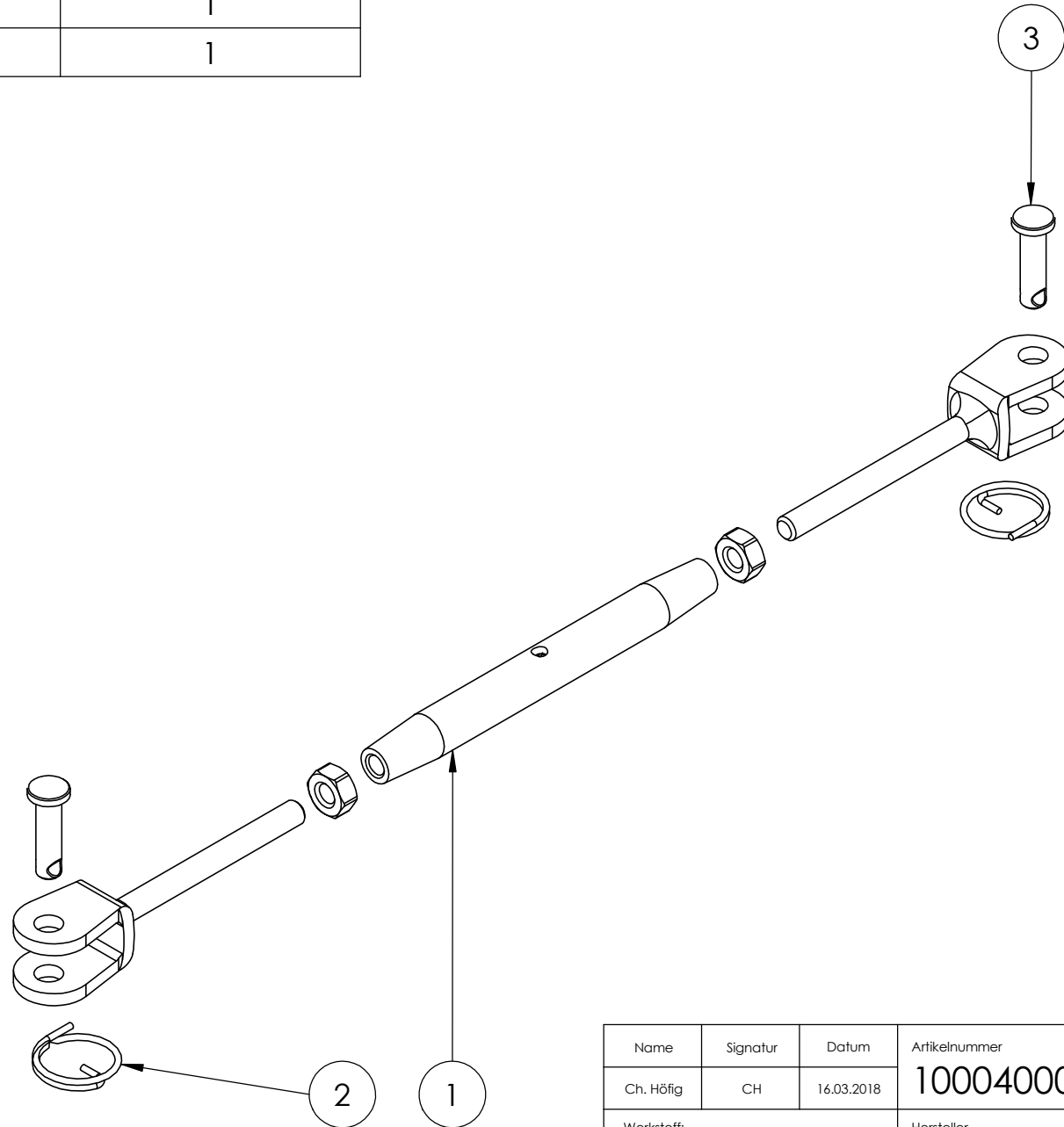
Name	Signatur	Datum	Artikelnummer	Oberfläche: Roh
Ch. Höfig	CH	16.03.2018	58321-240-4	
Werkstoff: 1.4301 (X5CrNi18-10)			Hersteller	Blattformat
			 <small>Qualitätsprodukte aus Edelstahl, Stahl und Schmiedeeisen</small>	
Gewicht 0,001 kg			Massstab: 2:1	Blatt 12 von 14
			A4	

POS-NR.	BENENNUNG	MENGE
1	100059004 Teil1	1
2	100059004 Teil2	1
3	100059004 Teil2	1
4	58321-240-4-L	1



Name	Signatur	Datum	Artikelnummer	Oberfläche: Elektropoliert
Ch. Höfig	CH	16.03.2018	<b>100059004</b>	
Werkstoff: 1.4401 (X5CrNiMo17-12-2)			Hersteller  Qualitätsprodukte aus Edelstahl, Stahl und Schmiedeeisen	Blattformat A4
Gewicht 0,014 kg			Massstab: 2:1	Blatt 13 von 14

POS-NR.	BENENNUNG	MENGE
1	100040004 Teil1	1
2	100058004	1
3	100059004	1



Name	Signatur	Datum	Artikelnummer	Oberfläche: Elektropoliert
Ch. Höfig	CH	16.03.2018	<b>100040004</b>	
Werkstoff: 1.4401 (X5CrNiMo17-12-2)			Hersteller  Qualitätsprodukte aus Edelstahl, Stahl und Schmiedeeisen	Blattformat A4
Gewicht 0,043 kg		Massstab: 1:1		Blatt 14 von 14