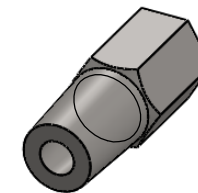
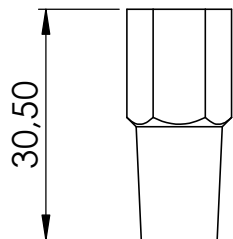
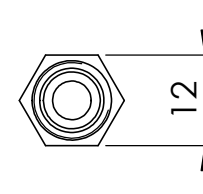
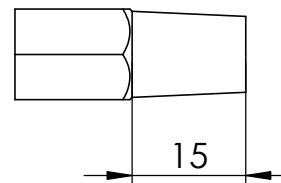
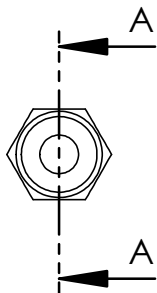
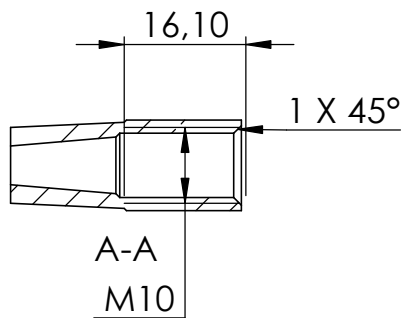
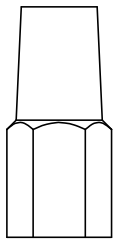
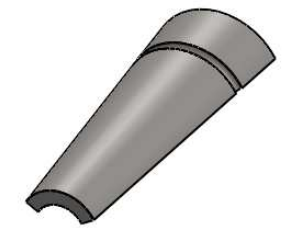
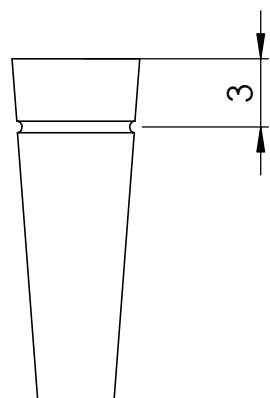
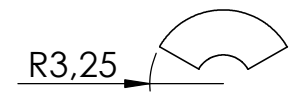
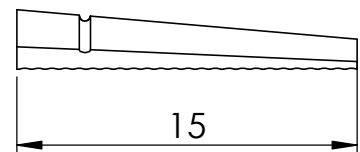
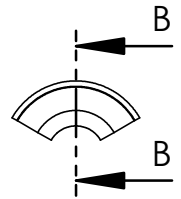
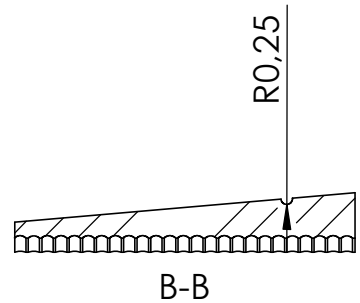
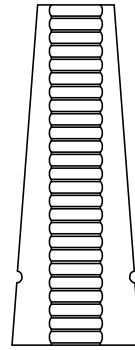


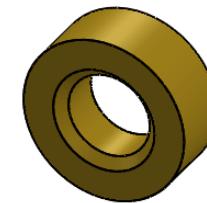
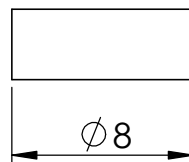
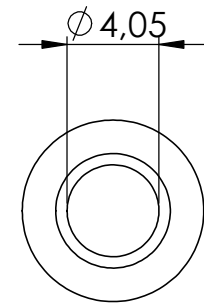
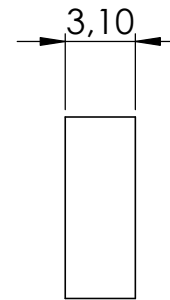
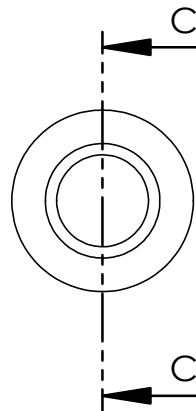
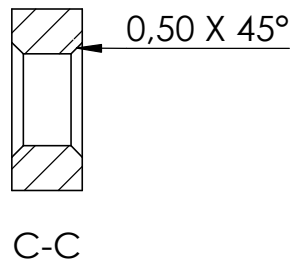
Name	Signatur	Datum	Artikelnummer	Oberfläche: Geschliffen Korn 240
Ch. Höfig	CH	13.03.2018	10170003	
Werkstoff: 1.4401 (X5CrNiMo17-12-2)			Hersteller  Qualitätsprodukte aus Edelstahl, Stahl und Schmiedeeisen	Blattformat A4
Gewicht 0,043 kg			Massstab: 1:1,5	Blatt 1 von 8



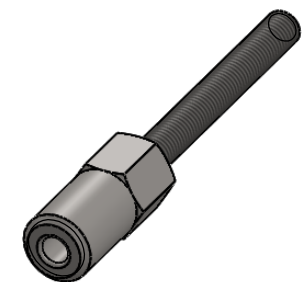
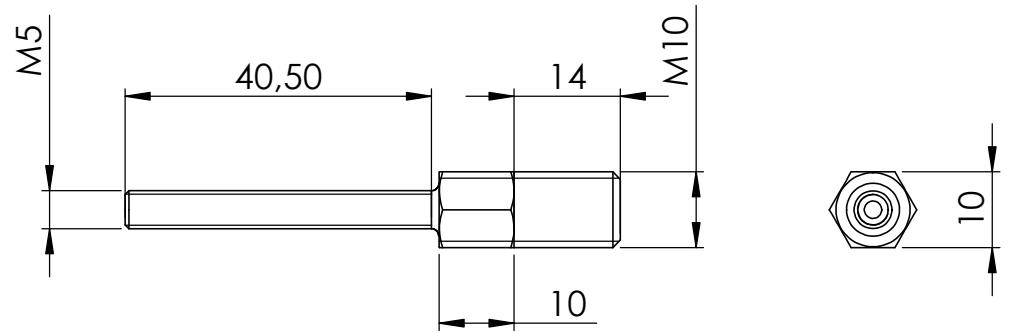
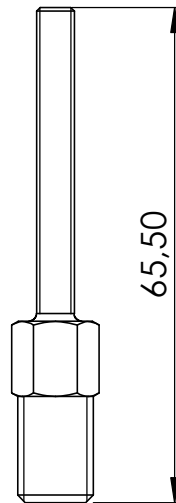
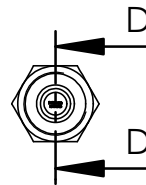
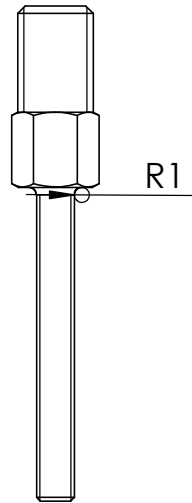
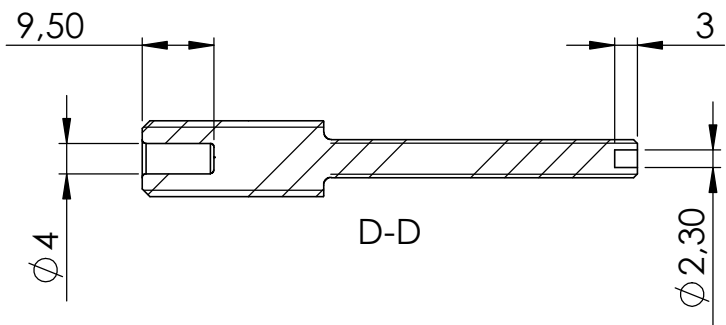
Name	Signatur	Datum	Artikelnummer	Oberfläche: Geschliffen Korn 240
Ch. Höfig	CH	13.03.2018	10170003 Teil1	
Werkstoff: 1.4401 (X5CrNiMo17-12-2)			Hersteller	Blattformat
			 <small>Qualitätsprodukte aus Edelstahl, Stahl und Schmiedeeisen</small>	
Gewicht 0,015 kg			Massstab: 1:1	Blatt 2 von 8
			A4	



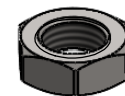
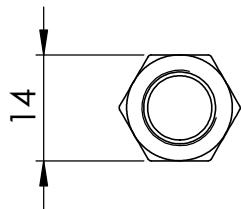
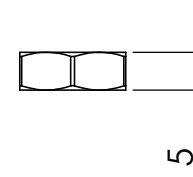
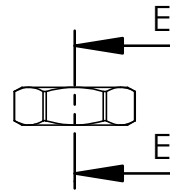
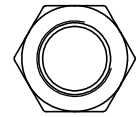
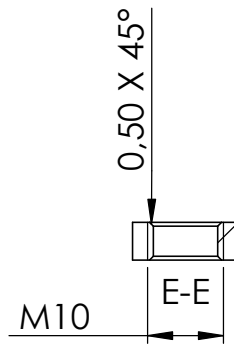
Name	Signatur	Datum	Artikelnummer	Oberfläche: Roh
Ch. Höfig	CH	13.03.2018	10170003 Teil2	
Werkstoff: 1.4401 (X5CrNiMo17-12-2)			Hersteller	Blattformat
			 <small>Qualitätsprodukte aus Edelstahl, Stahl und Schmiedeeisen</small>	
Gewicht 0,001 kg			Massstab: 3:1	Blatt 3 von 8
			A4	



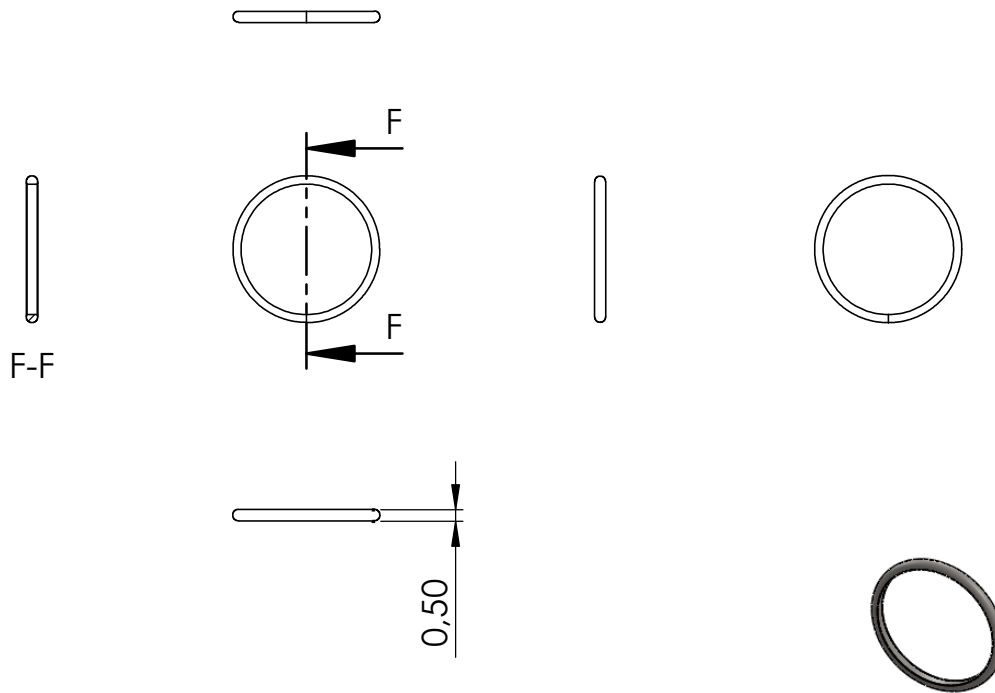
Name	Signatur	Datum	Artikelnummer	Oberfläche: Roh
Ch. Höfig	CH	13.03.2018	10170003 Teil3	
Werkstoff: Messing		Hersteller  Qualitätsprodukte aus Edelstahl, Stahl und Schmiedeeisen		Blattformat A4
Gewicht 0,001 kg		Massstab: 3:1		Blatt 4 von 8



Name	Signatur	Datum	Artikelnummer	Oberfläche: Elektropoliert
Ch. Höfig	CH	13.03.2018	10170003 Teil4	
Werkstoff:		Hersteller		Blattformat
1.4401 (X5CrNiMo17-12-2)		 Qualitätsprodukte aus Edelstahl, Stahl und Schmiedeeisen		A4
Gewicht 0,021 kg		Massstab: 1:1		Blatt 5 von 8



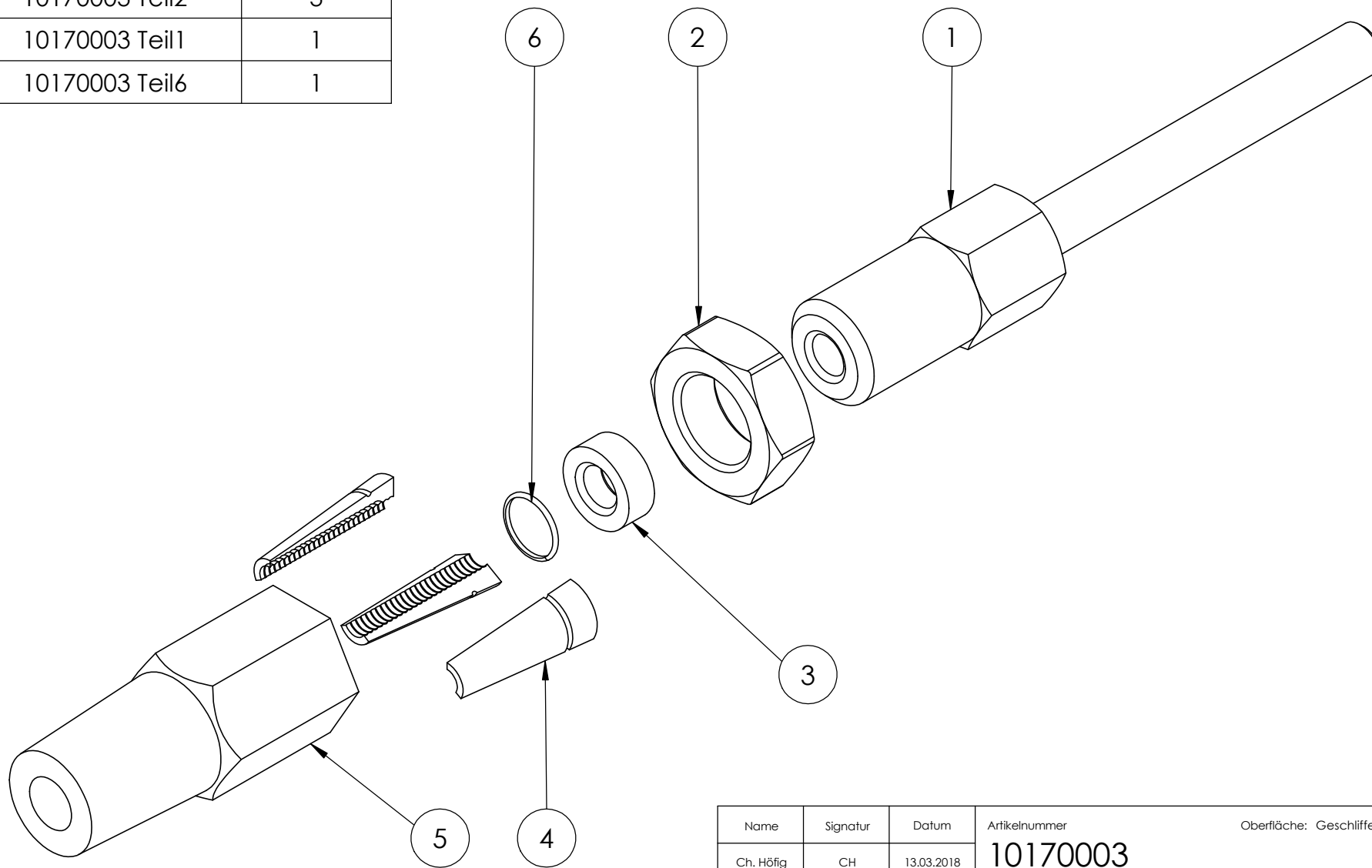
Name	Signatur	Datum	Artikelnummer	Oberfläche: Roh
Ch. Höfig	CH	13.03.2018	10170003 Teil5	
Werkstoff: 1.4401 (X5CrNiMo17-12-2)			Hersteller	Blattformat
			 <small>Qualitätsprodukte aus Edelstahl, Stahl und Schmiedeeisen</small>	
Gewicht 0,004 kg			Massstab: 1:1	Blatt 6 von 8
			A4	



Name	Signatur	Datum	Artikelnummer	Oberfläche: Roh
Ch. Höfig	CH	13.03.2018	10170003 Teil6	
Werkstoff: 1.4401 (X5CrNiMo17-12-2)			Hersteller	Blattformat
			 <small>Qualitätsprodukte aus Edelstahl, Stahl und Schmiedeeisen</small>	
Gewicht 0,000 kg			Massstab: 3:1	Blatt 7 von 8

A4

POS-NR.	BENENNUNG	MENGE
1	10170003 Teil4	1
2	10170003 Teil5	1
3	10170003 Teil3	1
4	10170003 Teil2	3
5	10170003 Teil1	1
6	10170003 Teil6	1



Name	Signatur	Datum	Artikelnummer	Oberfläche: Geschliffen Korn 240
Ch. Höfig	CH	13.03.2018	10170003	
Werkstoff: 1.4401 (X5CrNiMo17-12-2)			Hersteller  Qualitätsprodukte aus Edelstahl, Stahl und Schmiedeeisen	Blattformat A4
Gewicht 0,043 kg		Massstab: 2:1	Blatt 8 von 8	