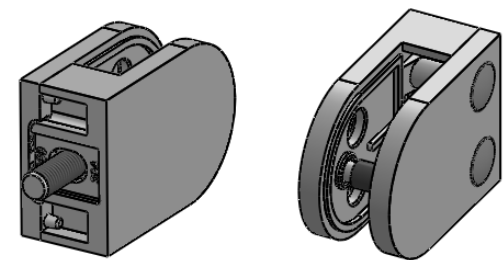
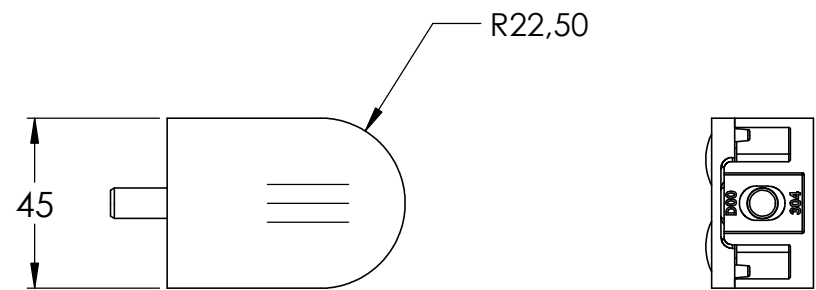

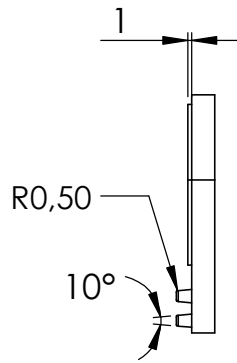


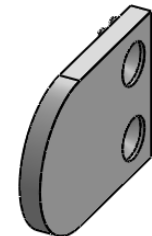
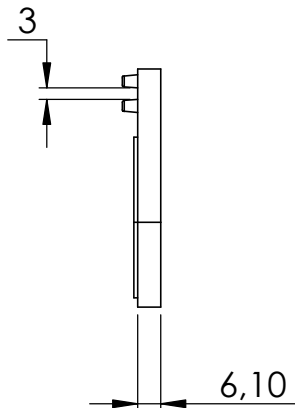
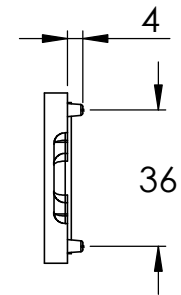
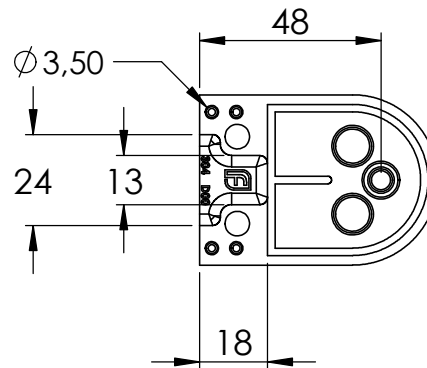
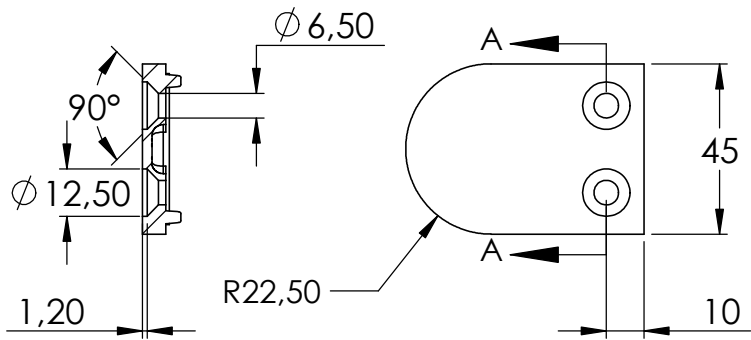
*lichter Abstand zum Glas und Pfosten
*clearance to glass and post




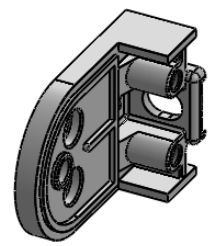
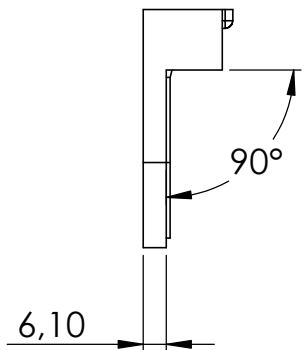
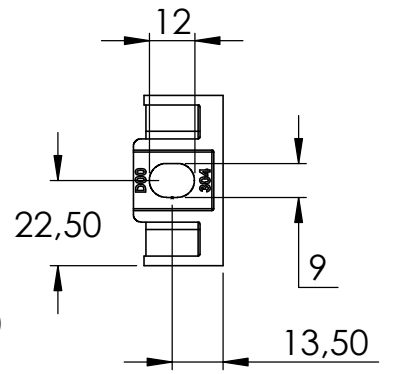
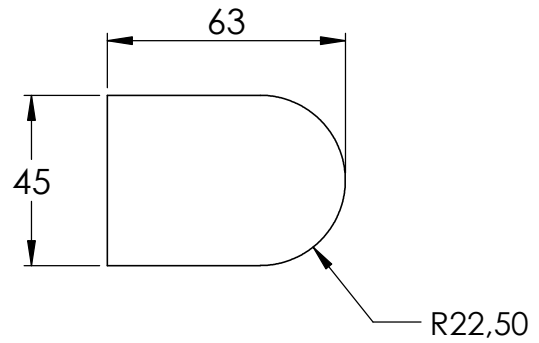
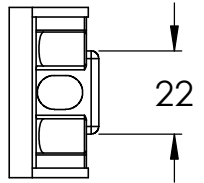
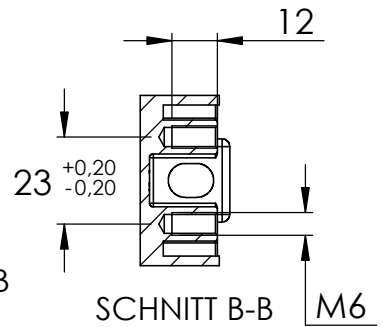
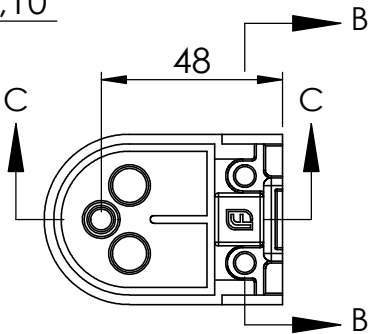
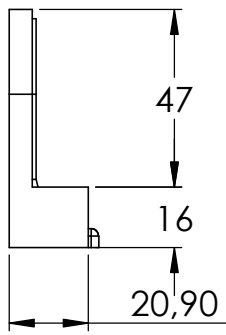
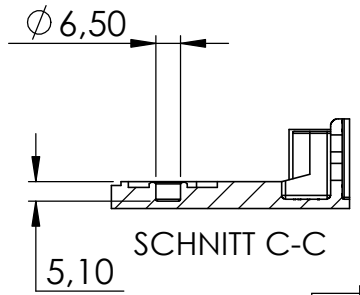
Name	Signatur	Datum	Artikelnummer	Oberfläche: Geschliffen Korn 240
Ch. Höfig	CH	03.12.2024	1200-V2A	
Werkstoff: 1.4301 (X5CrNi18-10)			Hersteller	Blattformat
				A4
Gewicht: 0.269 kg			Maßstab: 1:2	Version: 1 Deutsch Blatt 1 von 7



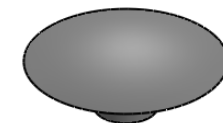
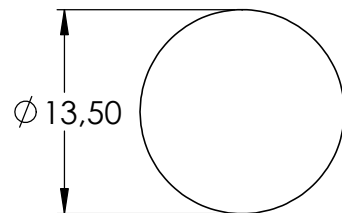
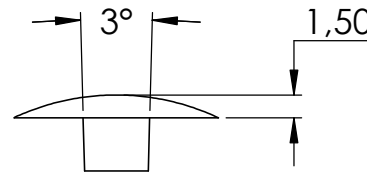
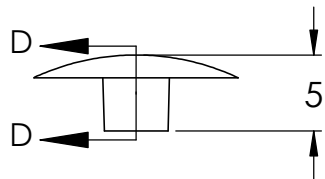
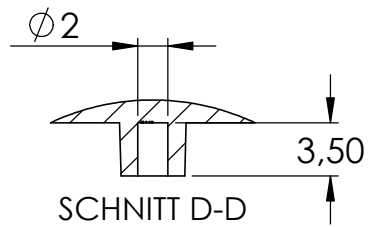
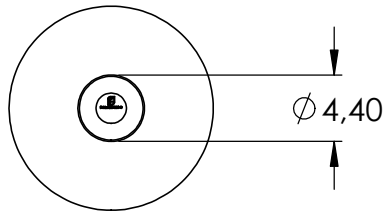
SCHNITT A-A




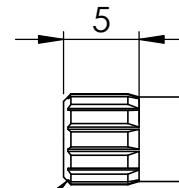
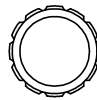
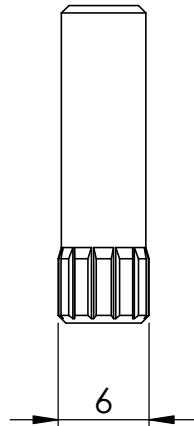
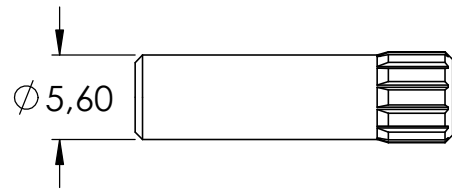
Name	Signatur	Datum	Artikelnummer	Oberfläche: Geschliffen Korn 240
Ch. Höfig	CH	03.12.2024	1200-V2A Teil1	
Werkstoff: 1.4301 (X5CrNi18-10)			Hersteller	Blattformat
				A4
Gewicht: 0.106 kg			Maßstab: 1:2	Version: 1 Deutsch Blatt 2 von 7



Name	Signatur	Datum	Artikelnummer	Oberfläche: Geschliffen Korn 240
Ch. Höfig	CH	03.12.2024	1200-V2A Teil2	
Werkstoff: 1.4301 (X5CrNi18-10)			Hersteller	Blattformat
				A4
Gewicht: 0.148 kg			Maßstab: 1:2	Version: 1 Deutsch Blatt 3 von 7

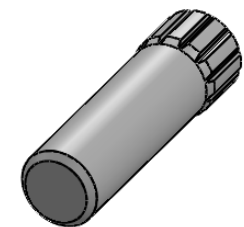
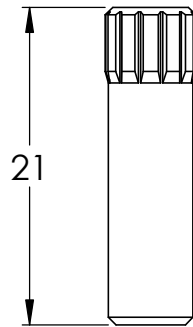



Name	Signatur	Datum	Artikelnummer	Oberfläche: Grau
Ch. Höfig	CH	03.12.2024	GK-P-G	
Werkstoff: LDPE			Hersteller	Blattformat
				A4
Gewicht: 0,000 kg			Maßstab: 2:1	Version: 1 Deutsch Blatt 4 von 7

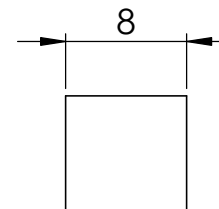
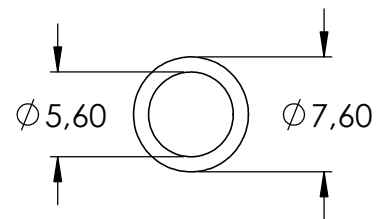


0,50 X 45°

0,50 X 45°

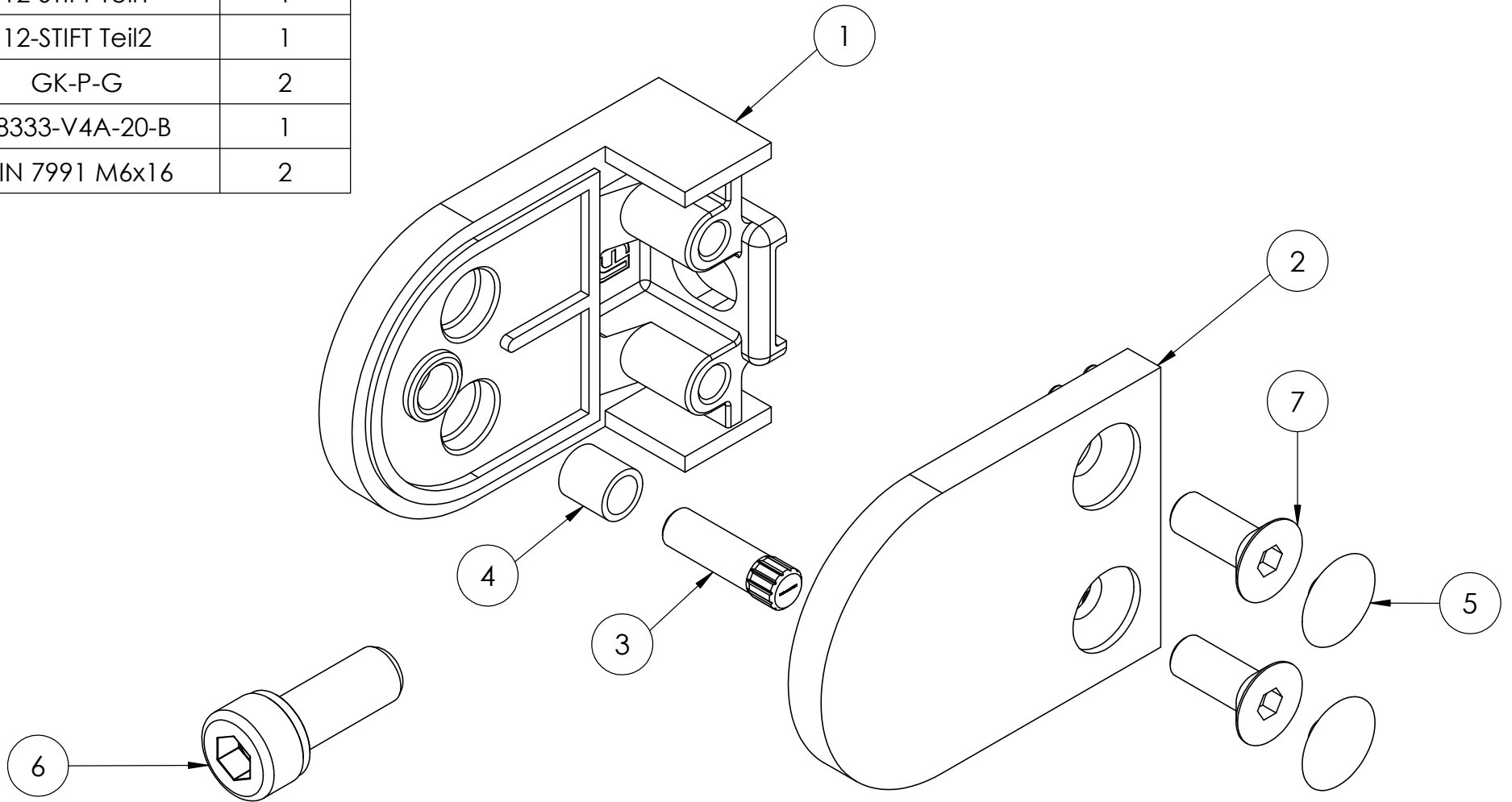



Name	Signatur	Datum	Artikelnummer	Oberfläche: Roh
Ch. Höfig	CH	03.12.2024	12-STIFT Teil1	
Werkstoff: 1.4401/04 (X5CrNiMo17-12-2)			Hersteller	Blattformat
				A4
Gewicht: 0.004 kg			Maßstab: 2:1	Version: 1 Deutsch Blatt 5 von 7



Name	Signatur	Datum	Artikelnummer	Oberfläche: Roh
Ch. Höfig	CH	03.12.2024	12-STIFT Teil2	
Werkstoff: EPDM			Hersteller	Blattformat
				A4
Gewicht: 0.000 kg			Maßstab: 2:1	Version: 1 Deutsch Blatt 6 von 7

POS-NR.	BENENNUNG	MENGE
1	1200-V2A Teil2	1
2	1200-V2A Teil1	1
3	12-STIFT Teil1	1
4	12-STIFT Teil2	1
5	GK-P-G	2
6	58333-V4A-20-B	1
7	DIN 7991 M6x16	2



Name	Signatur	Datum	Artikelnummer	Oberfläche: Geschliffen Korn 240
Ch. Höfig	CH	03.12.2024	1200-V2A	
Werkstoff: 1.4301 (X5CrNi18-10)			Hersteller	Blattformat
				A4
Gewicht: 0.269 kg			Maßstab: 1.25:1	Version: 1 Deutsch Blatt 7 von 7