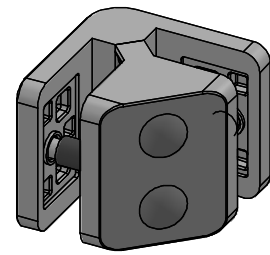
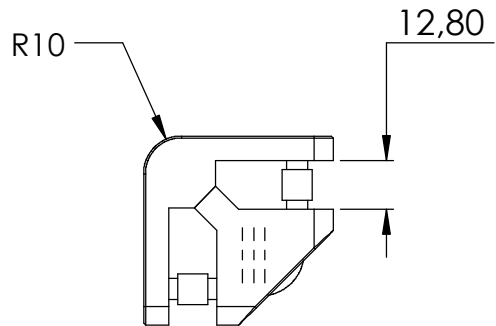
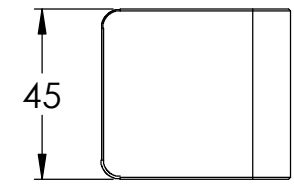
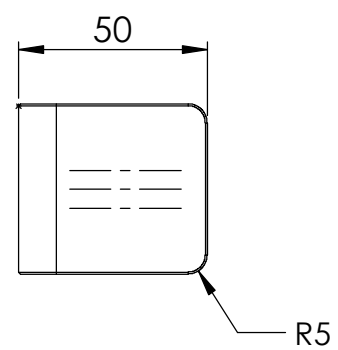
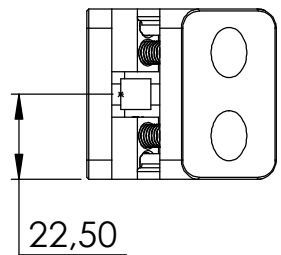
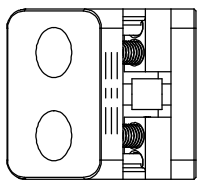
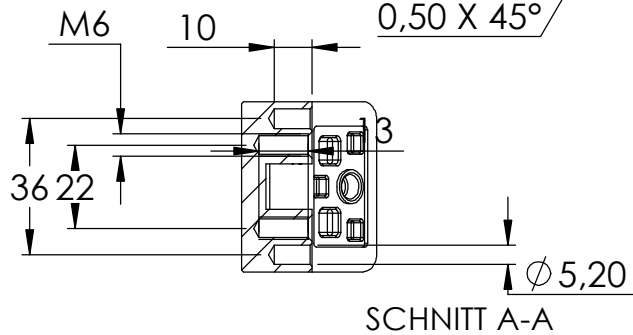
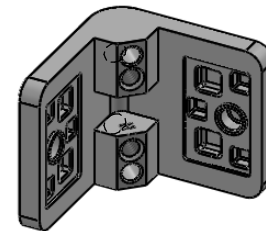
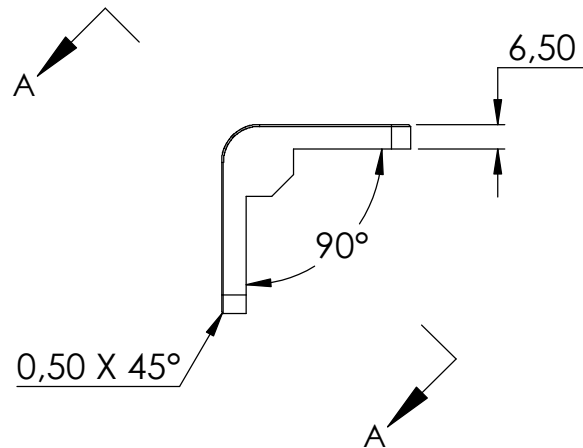
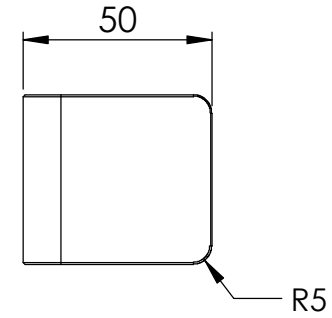
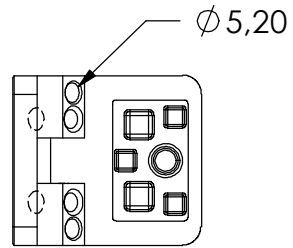
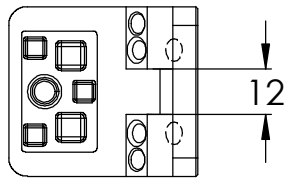
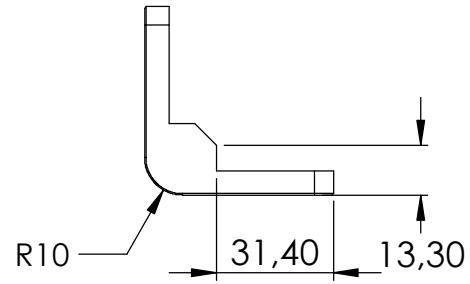


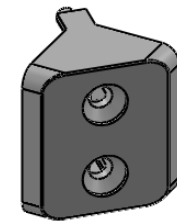
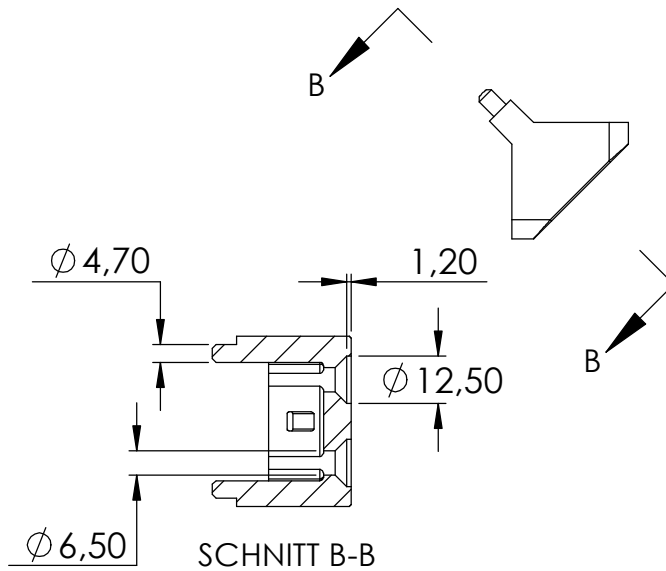
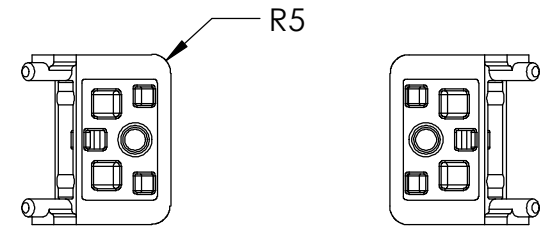
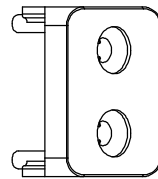
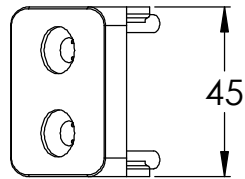
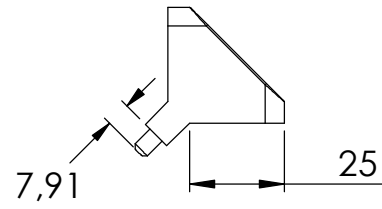
* empfohlener
Glaseinstand



Name	Signatur	Datum	Artikelnummer	Oberfläche: Geschliffen Korn 240
Ch. Höfig	CH	23.08.2023	27-V2A-90	
Werkstoff: 1.4301 (X5CrNi18-10)			Hersteller	Blattformat
				A4
Gewicht: 0.394 kg			Maßstab: 1:2	Version: 1 Deutsch Blatt 1 von 4

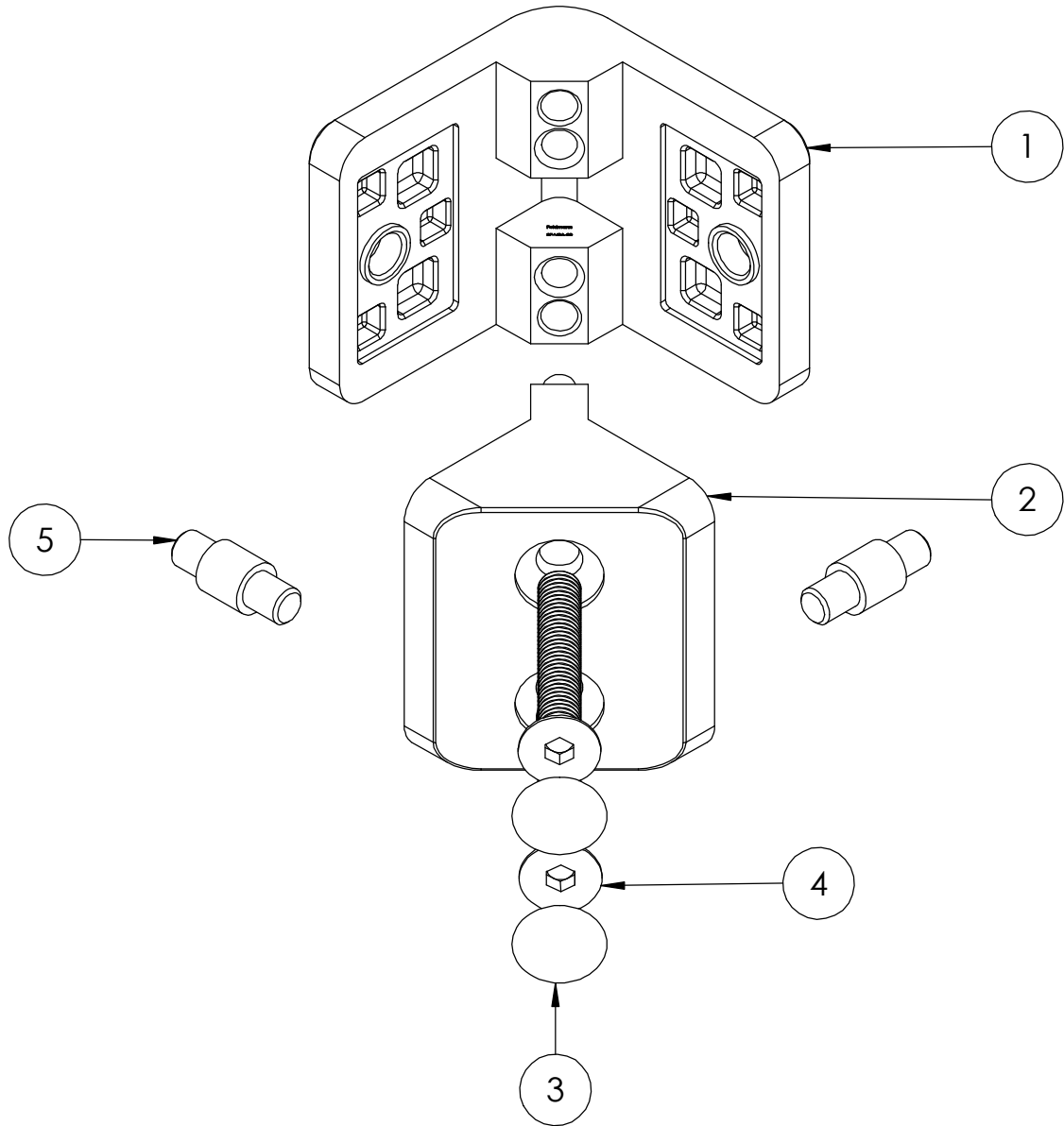



Name	Signatur	Datum	Artikelnummer	Oberfläche: Geschliffen Korn 240
Ch. Höfig	CH	23.08.2023	27-V2A-90 Teil 1	
Werkstoff: 1.4301 (X5CrNi18-10)			Hersteller	Blattformat
				A4
Gewicht: 0.214 kg			Maßstab: 1:2	Version: 1 Deutsch Blatt 2 von 4



Name	Signatur	Datum	Artikelnummer	Oberfläche: Geschliffen Korn 240
Ch. Höfig	CH	23.08.2023	27-V2A-90 Teil2	
Werkstoff: 1.4301 (X5CrNi18-10)			Hersteller	Blattformat
				A4
Gewicht: 0.169 kg		Maßstab: 1:2	Version: 1	Deutsch
Blatt 3 von 4				

POS-NR.	BENENNUNG	MENGE
1	27-V2A-90 Teil1	1
2	27-V2A-90 Teil2	1
3	27-Kappe	2
4	DIN 7991 - M6 x 40 --- 40S	2
5	27-STIFT-OR	2
	27-STIFT Teil2	1



Name	Signatur	Datum	Artikelnummer	Oberfläche: Geschliffen Korn 240
Ch. Höfig	CH	23.08.2023	27-V2A-90	
Werkstoff: 1.4301 (X5CrNi18-10)		Hersteller		Blattformat
				A4
Gewicht: 0.394 kg		Maßstab: 1:1	Version: 1	Deutsch
		Blatt 4 von 4		