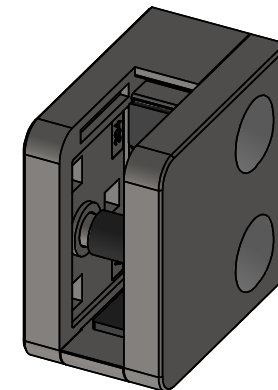
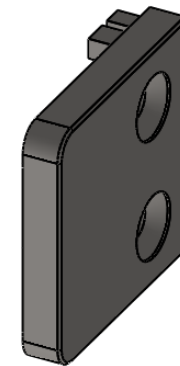
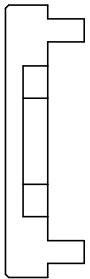
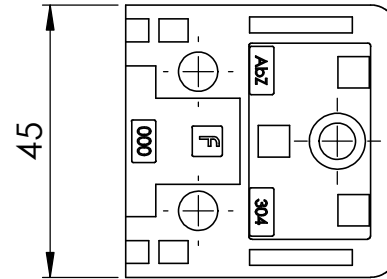
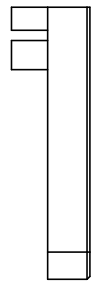
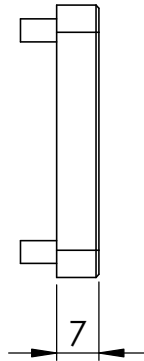
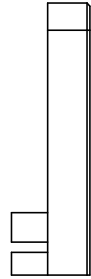
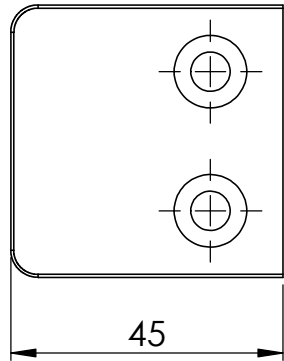


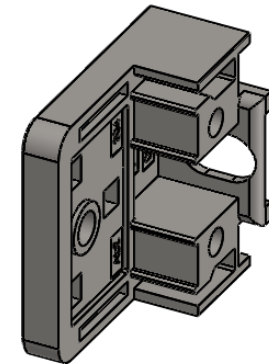
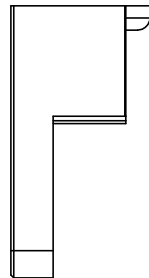
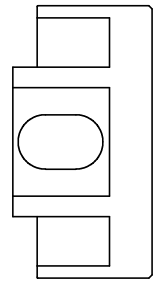
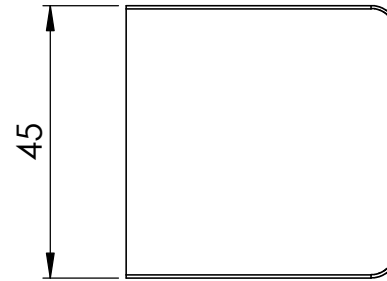
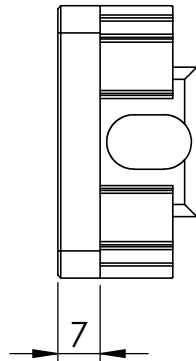
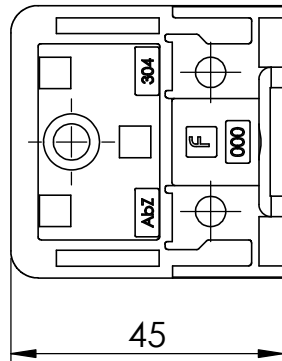
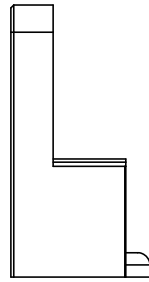
*lichter Abstand zwischen Pfosten und Glas



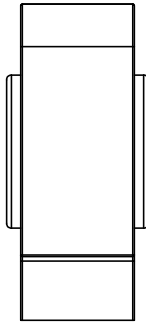
Name	Signatur	Datum	Artikelnummer	Oberfläche: Geschliffen Korn 240
Ch. Höfig	CH	07.12.2016	3100-V2A	
Werkstoff: 1.4301 (X5CrNi18-10)			Hersteller  Qualitätsprodukte aus Edelstahl, Stahl und Schmiedeeisen	Blattformat A4
Gewicht 0,247 kg			Massstab: 1:1,25	Blatt 1 von 6



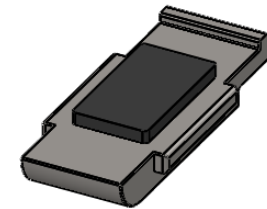
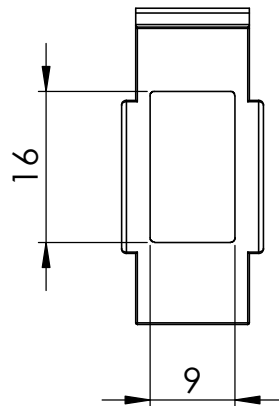
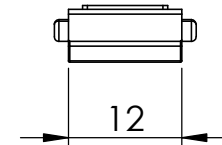
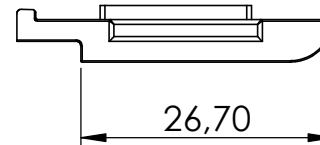
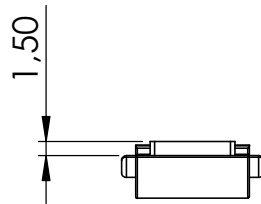
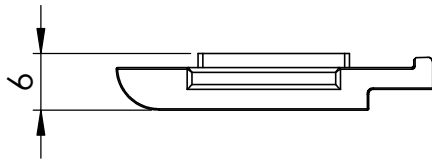
Name	Signatur	Datum	Artikelnummer	Oberfläche: Geschliffen Korn 240
Ch. Höfig	CH	07.12.2016	3100-V2A	
Werkstoff: 1.4301 (X5CrNi18-10)			Hersteller  Qualitätsprodukte aus Edelstahl, Stahl und Schmiedeeisen	Blattformat A4
Gewicht 0,090 kg			Massstab: 1:1,25	Blatt 2 von 6




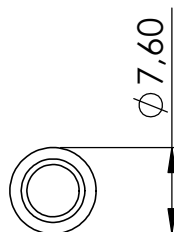
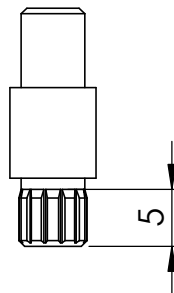
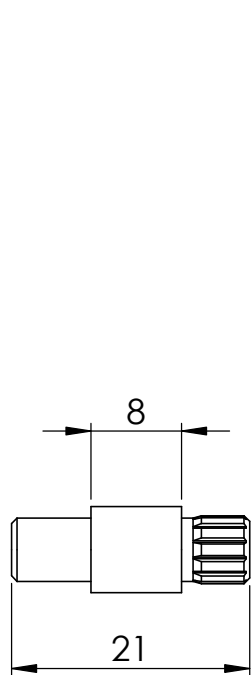
Name	Signatur	Datum	Artikelnummer	Oberfläche: Geschliffen Korn 240
Ch. Höfig	CH	07.12.2016	3100-V2A	
Werkstoff: 1.4301 (X5CrNi18-10)			Hersteller  Qualitätsprodukte aus Edelstahl, Stahl und Schmiedeeisen	Blattformat A4
Gewicht 0,133 kg			Massstab: 1:1,25	Blatt 3 von 6



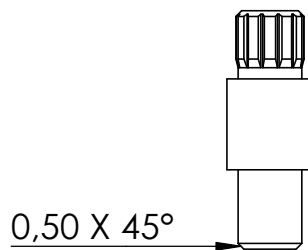
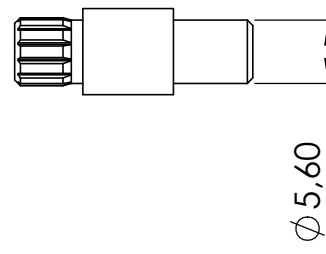
Sicherungsboden optional erhältlich



Name	Signatur	Datum	Artikelnummer	Oberfläche: Geschliffen Korn 240
Ch. Höfig	CH	07.12.2016	31-Boden-V2A	
Werkstoff: 1.4301 (X5CrNi18-10)			Hersteller	Blattformat
			 Qualitätsprodukte aus Edelstahl, Stahl und Schmiedeeisen	A4
Gewicht 0,015 kg			Maßstab: 1:25:1	Blatt 4 von 6



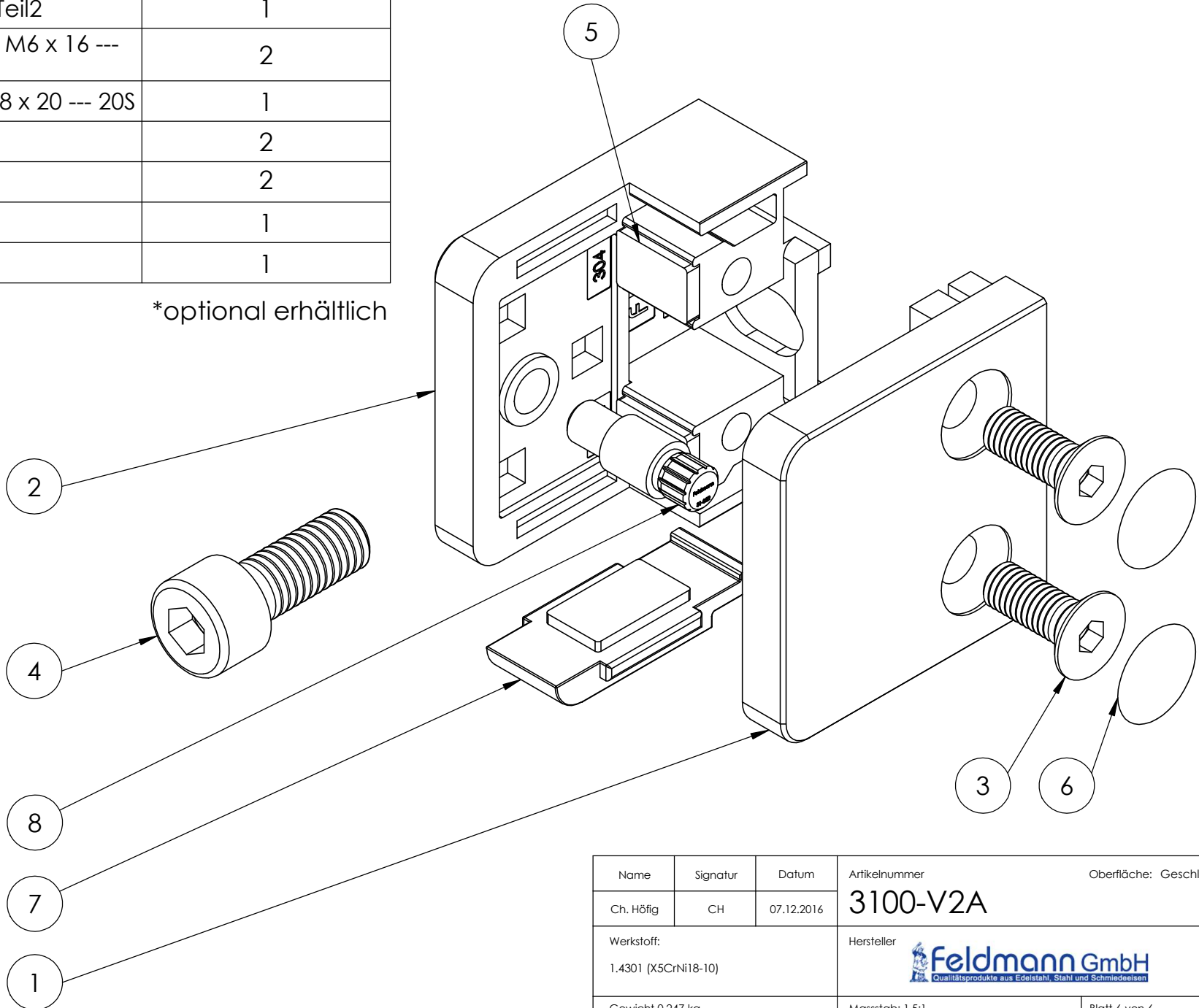
Sicherungsstift optional erhältlich



Name	Signatur	Datum	Artikelnummer	Oberfläche: Roh
Ch. Höfig	CH	07.12.2016	31-Stift	
Werkstoff: 1.4401 (X5CrNiMo17-12-2)		Hersteller  Qualitätsprodukte aus Edelstahl, Stahl und Schmiedeeisen		Blattformat A4
Gewicht 0,004 kg		Massstab: 1,5:1		Blatt 5 von 6

POS-NR.	BENENNUNG	MENGE
1	3100-XXX Teil1	1
2	3100-XXX Teil2	1
3	DIN 7991 - M6 x 16 --- 16S	2
4	DIN 912 M8 x 20 --- 20S	1
5	Gummi	2
6	Kappe	2
7	Boden*	1
8	31-Stift*	1

*optional erhältlich



Name	Signatur	Datum	Artikelnummer	Oberfläche: Geschliffen Korn 240
Ch. Höfig	CH	07.12.2016	3100-V2A	
Werkstoff: 1.4301 (X5CrNi18-10)		Hersteller  Qualitätsprodukte aus Edelstahl, Stahl und Schmiedeeisen		Blattformat A4
Gewicht 0,247 kg		Massstab: 1,5:1	Blatt 6 von 6	