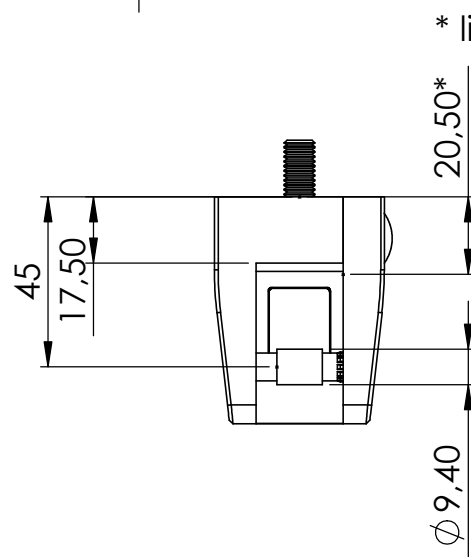
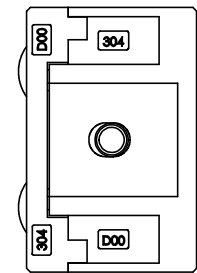
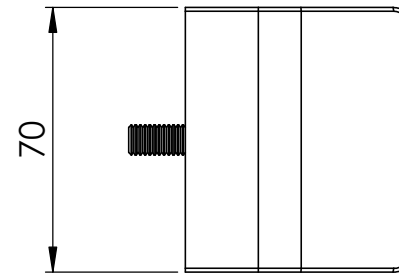
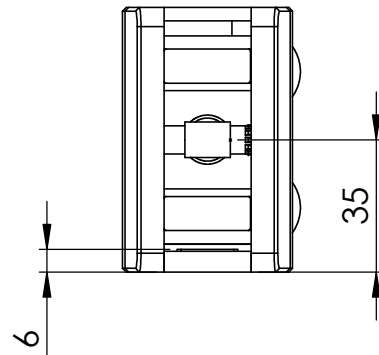
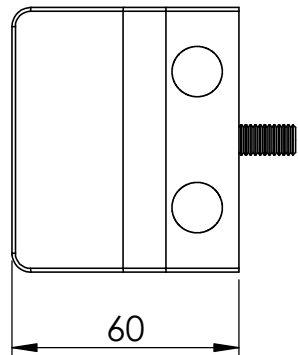
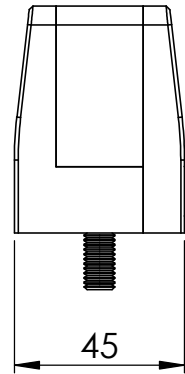
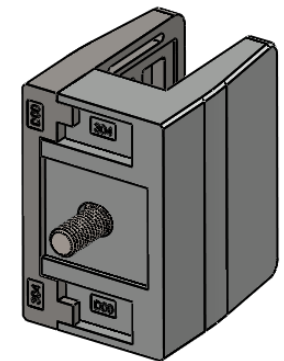
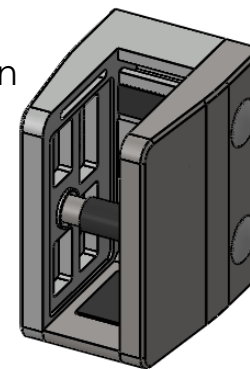


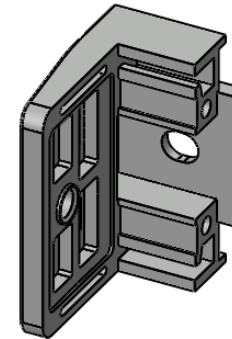
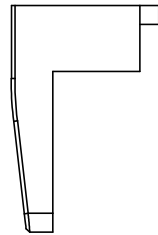
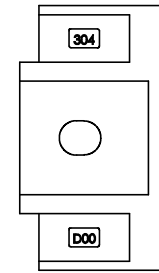
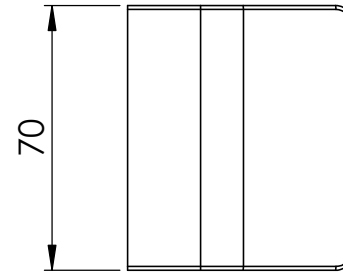
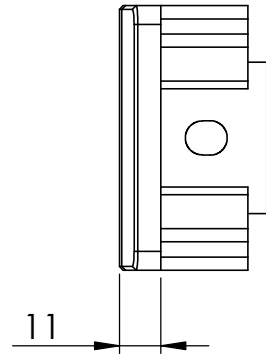
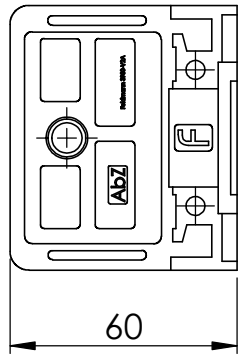
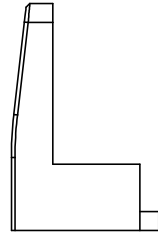
Sicherungsstift und
Sicherungsboden
optional erhältlich



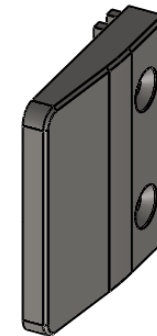
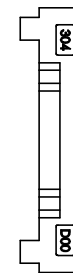
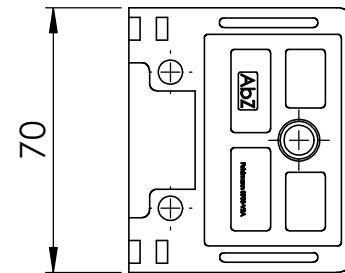
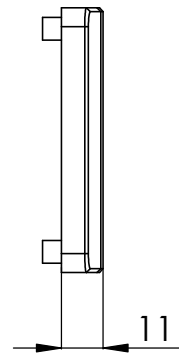
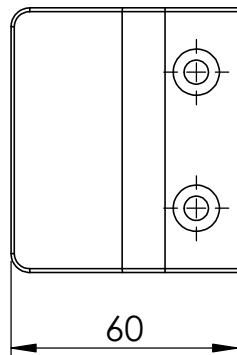
* lichter Abstand zwischen
Glas und Pfosten



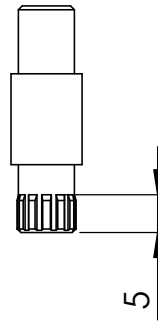
Name	Signatur	Datum	Artikelnummer	Oberfläche: Geschliffen Korn 240
Ch. Höfig	CH	15.02.2017	3900-V2A	
Werkstoff: 1.4301 (X5CrNi18-10)			Hersteller	Blattformat
			 Feldmann GmbH Qualitätsprodukte aus Edelstahl, Stahl und Schmiedeeisen	A4
Gewicht 0,673 kg			Massstab: 1:2	Blatt 1 von 6



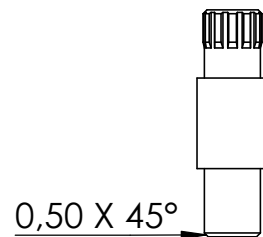
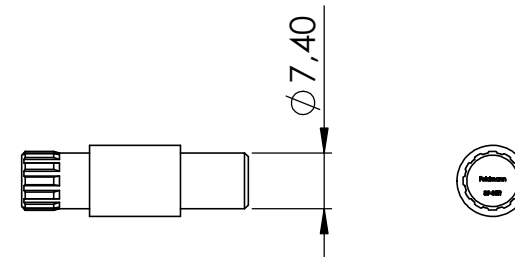
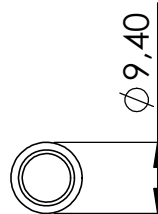
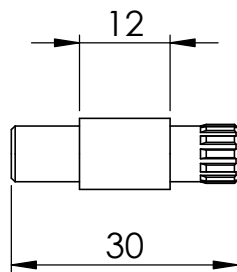
Name	Signatur	Datum	Artikelnummer	Oberfläche: Geschliffen Korn 240
Ch. Höfig	CH	15.02.2017	3900-V2A	
Werkstoff: 1.4301 (X5CrNi18-10)			Hersteller  Qualitätsprodukte aus Edelstahl, Stahl und Schmiedeeisen	Blattformat A4
Gewicht 0,359 kg			Massstab: 1:2	Blatt 2 von 6



Name	Signatur	Datum	Artikelnummer	Oberfläche: Geschliffen Korn 240
Ch. Höfig	CH	15.02.2017	3900-V2A	
Werkstoff: 1.4301 (X5CrNi18-10)			Hersteller	Blattformat
			 Qualitätsprodukte aus Edelstahl, Stahl und Schmiedeeisen	A4
Gewicht 0,250 kg			Massstab: 1:2	Blatt 3 von 6

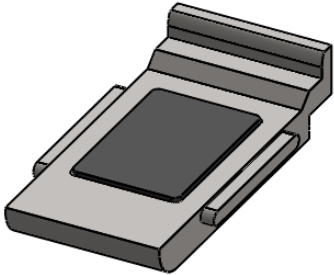
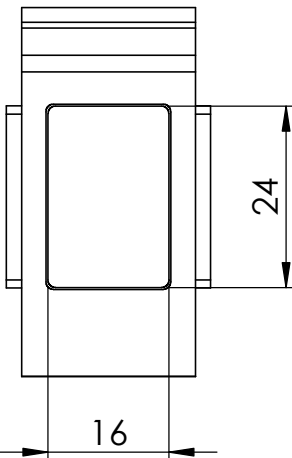
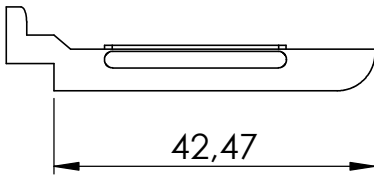
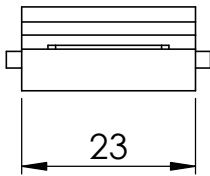
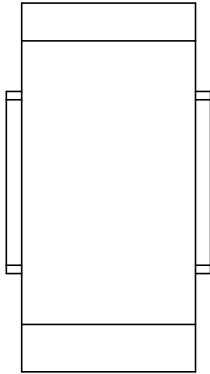
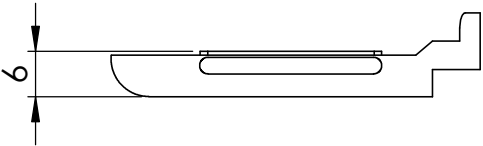



Sicherungsstift optional erhältlich



Name	Signatur	Datum	Artikelnummer	Oberfläche: Roh
Ch. Höfig	CH	15.02.2017	39-Stift	
Werkstoff: 1.4401 (X5CrNiMo17-12-2)		Hersteller  Qualitätsprodukte aus Edelstahl, Stahl und Schmiedeeisen		Blattformat A4
Gewicht 0,011 kg		Massstab: 1:1		Blatt 4 von 6

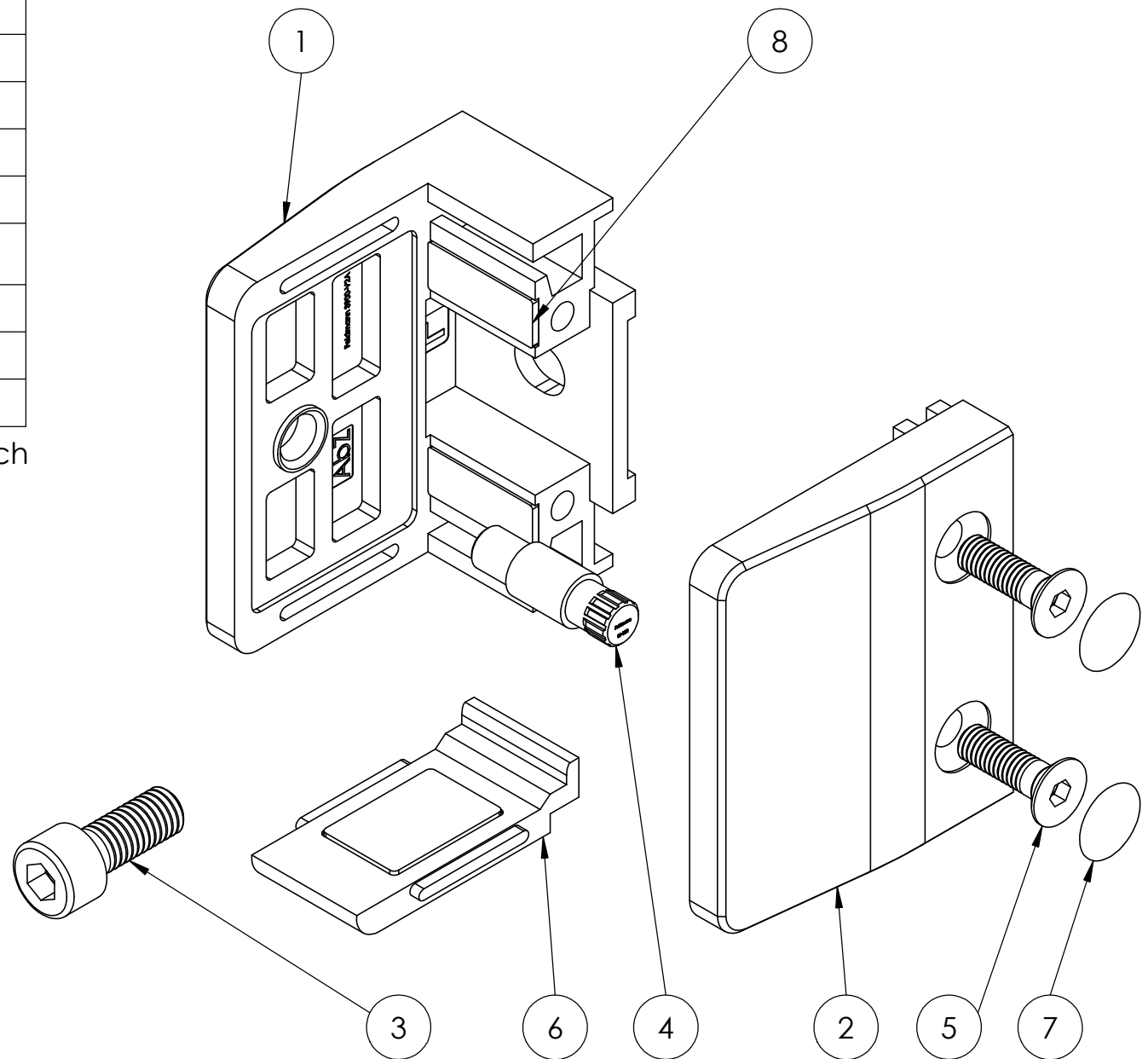
Sicherungsboden optional erhältlich



Name	Signatur	Datum	Artikelnummer	Oberfläche: Geschliffen Korn 240
Ch. Höfig	CH	15.02.2017	39-Boden-V2A	
Werkstoff: 1.4301 (X5CrNi18-10)		Hersteller  Feldmann GmbH Qualitätsprodukte aus Edelstahl, Stahl und Schmiedeeisen		Blattformat A4
Gewicht 0,049 kg		Massstab: 1:1		Blatt 5 von 6

POS-NR.	BENENNUNG	MENGE
1	3900-V2A	1
2	3900-V2A	1
3	DIN 912 M8 x 20 --- 20S	1
4	39-Stift*	1
5	DIN 7991 - M6 x 20 --- 13.7S	2
6	39-Boden-V2A*	1
7	39-Kappe	2
8	39-Haltegummi	2

*optional erhältlich



Name	Signatur	Datum	Artikelnummer	Oberfläche: Geschliffen Korn 240
Ch. Höfig	CH	15.02.2017	3900-V2A	
Werkstoff:		Hersteller		Blattformat
1.4301 (X5CrNi18-10)		 <small>Qualitätsprodukte aus Edelstahl, Stahl und Schmiedeeisen</small>		A4
Gewicht 0,673 kg		Massstab: 1:1		Blatt 6 von 6