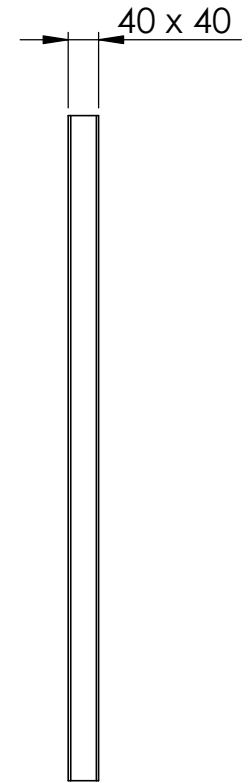
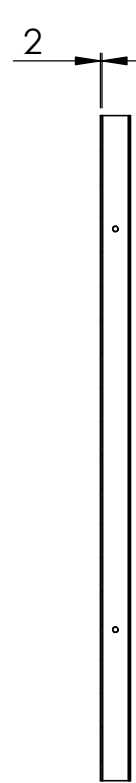
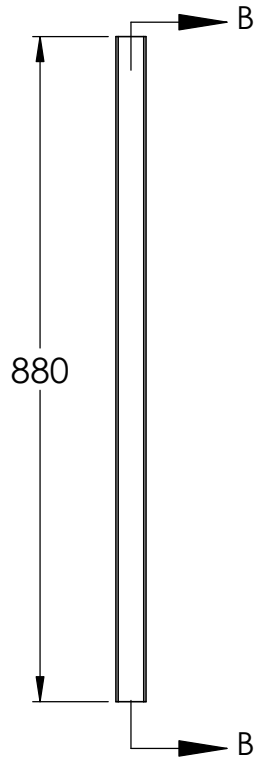
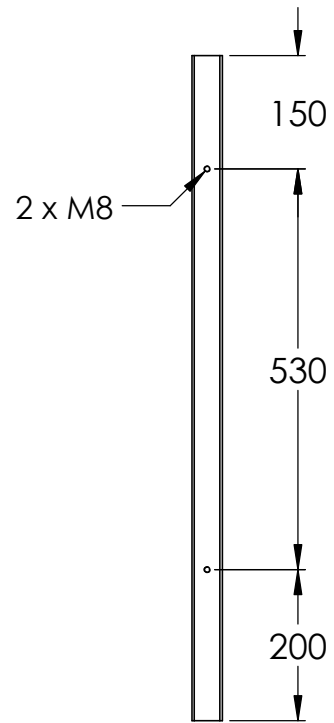
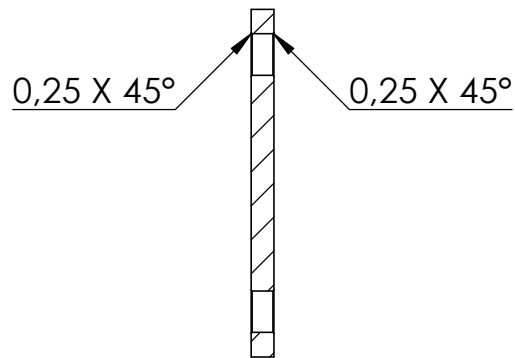
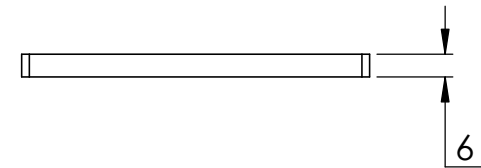
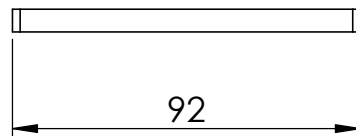
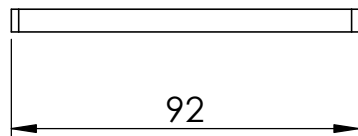
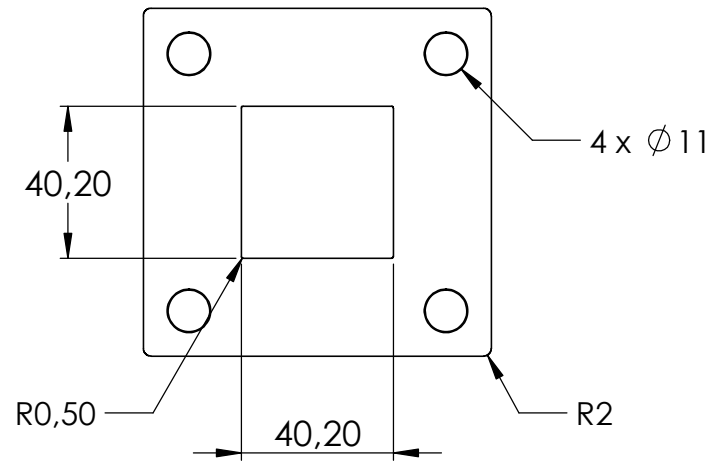


Name	Signatur	Datum	Artikelnummer	Oberfläche: Geschliffen Korn 240
Ch. Höfig	CH	02.09.2019	40560-240	
Werkstoff: 1.4301 (X5CrNi18-10)			Hersteller	Blattformat
			 <b>Feldmann</b> EDELSTAHL · ALUMINIUM · SCHMIEDEISEN	A4
Gewicht 2.483 kg		Massstab: 1:10	Version: 1	Blatt 1 von 5

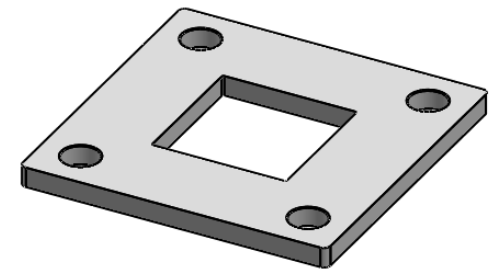
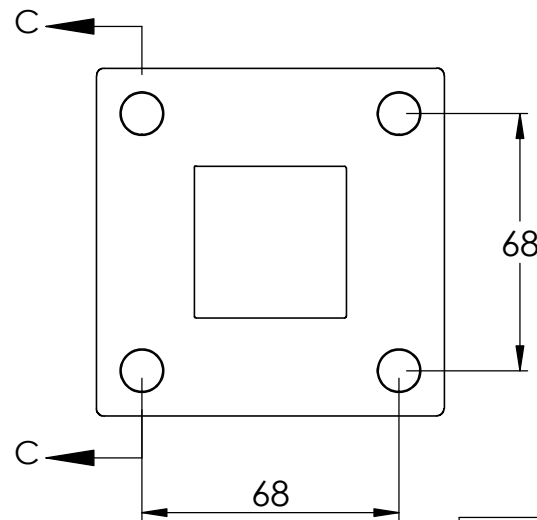


SCHNITT B-B

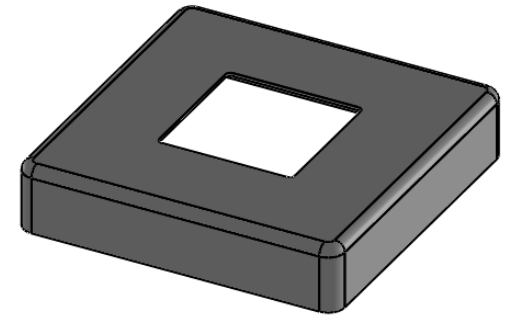
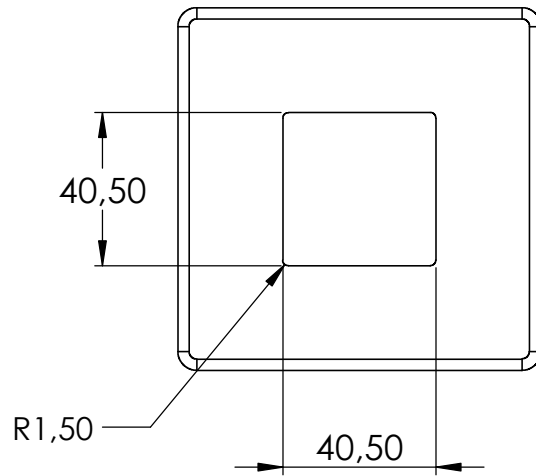
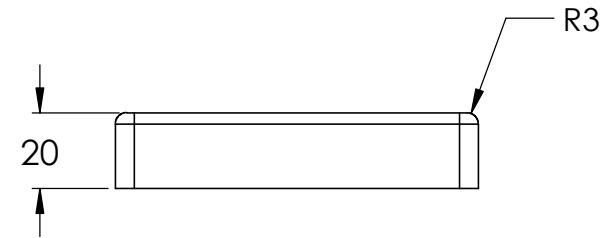
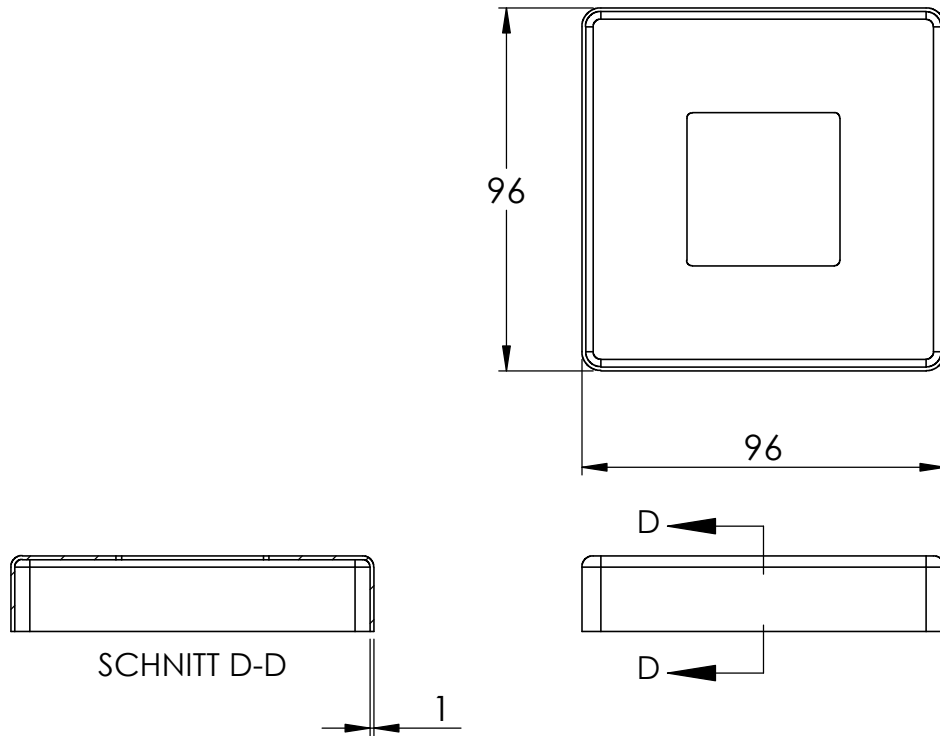
Name	Signatur	Datum	Artikelnummer	Oberfläche: Geschliffen Korn 240
Ch. Höfig	CH	02.09.2019	40560-240 Teil 1	
Werkstoff: 1.4301 (X5CrNi18-10)			Hersteller	Blattformat
			 <b>Feldmann</b> EDELSTAHL · ALUMINIUM · SCHMIEDEISEN	A4
Gewicht 2,065 kg		Massstab: 1:10	Version: 1	Blatt 2 von 5



SCHNITT C-C

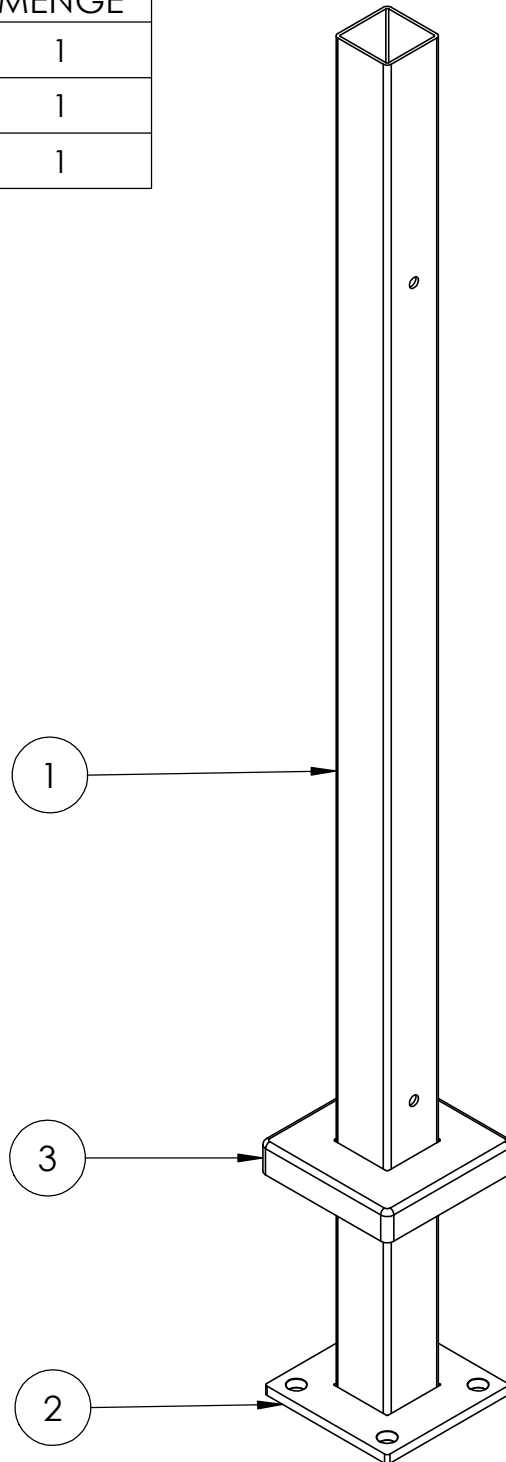


Name	Signatur	Datum	Artikelnummer	Oberfläche: Geschliffen Korn 240
Ch. Höfig	CH	02.09.2019	54208-240	
Werkstoff: 1.4301 (X5CrNi18-10)			Hersteller	Blattformat
			 <b>Feldmann</b> EDELSTAHL-ALUMINIUM-SCHMIEDEISEN	A4
Gewicht 0,306 kg		Massstab: 1:2	Version: 1	Blatt 3 von 5



Name	Signatur	Datum	Artikelnummer	Oberfläche: Geschliffen Korn 240	
Ch. Höfig	CH	02.09.2019	51250-240		
Werkstoff: 1.4301 (X5CrNi18-10)			Hersteller  <b>Feldmann</b> EDELSTAHL · ALUMINIUM · SCHMIEDEISEN		Blattformat A4
Gewicht 0,112 kg		Massstab: 1:2	Version: 1	Blatt 4 von 5	

POS-NR.	BENENNUNG	MENGE
1	40560-240 Teil1	1
2	54208-240	1
3	51250-240	1



Name	Signatur	Datum	Artikelnummer	Oberfläche: Geschliffen Korn 240
Ch. Höfig	CH	02.09.2019	40560-240	
Werkstoff: 1.4301 (X5CrNi18-10)			Hersteller	Blattformat
			 <b>Feldmann</b> EDELSTAHL · ALUMINIUM · SCHMIEDEEISEN	A4
Gewicht 2,483 kg		Massstab: 1:4	Version: 1	Blatt 5 von 5