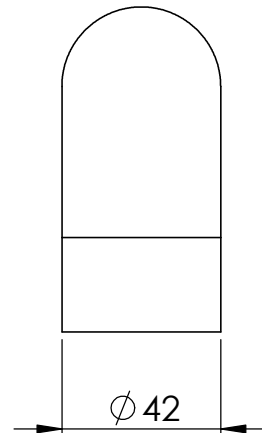
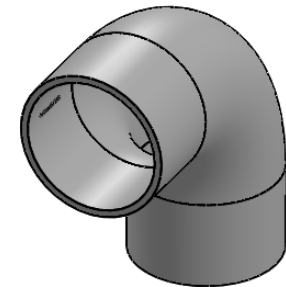
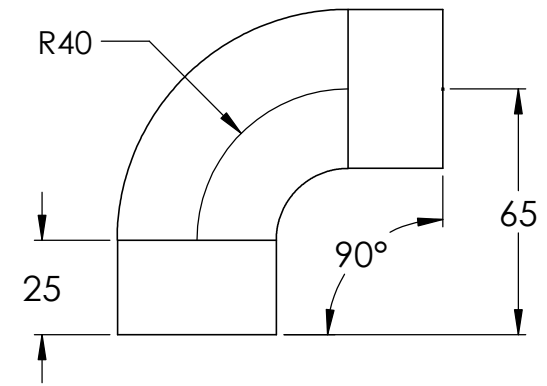
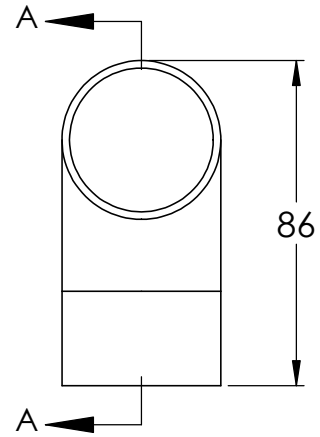
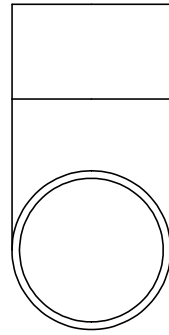
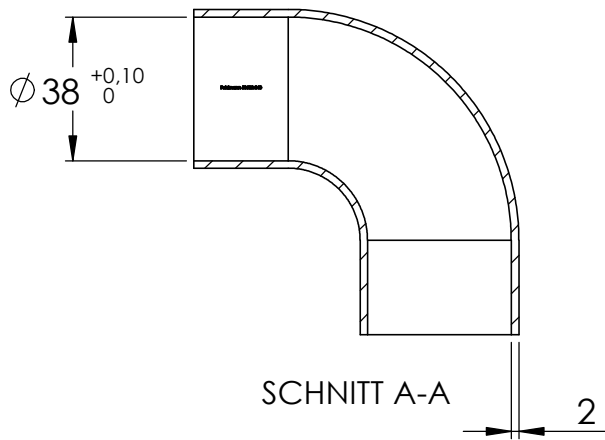
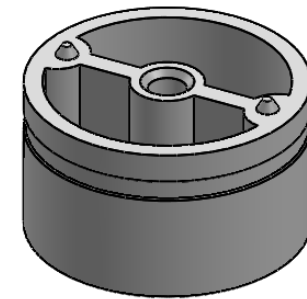
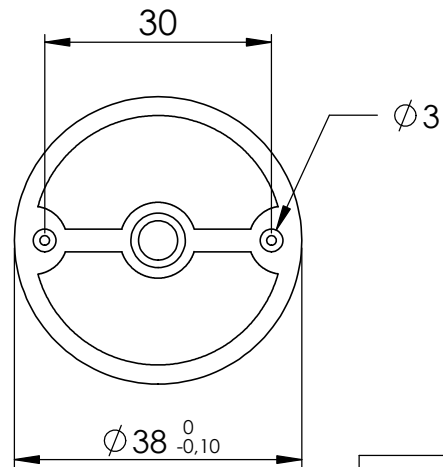
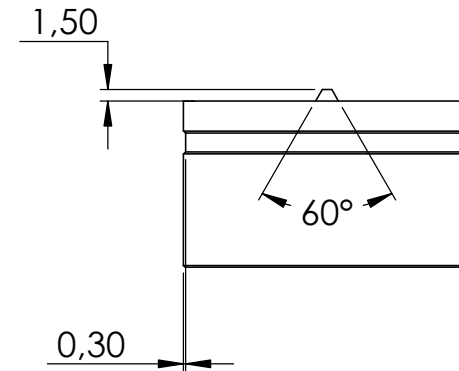
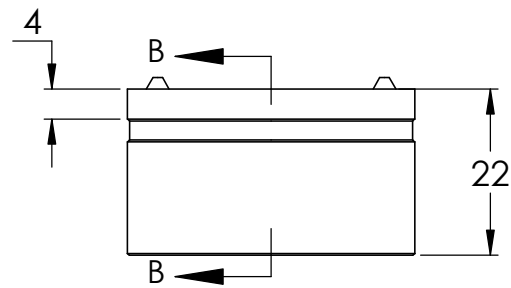
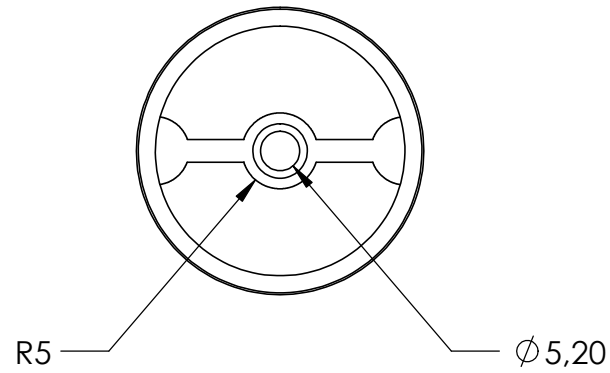
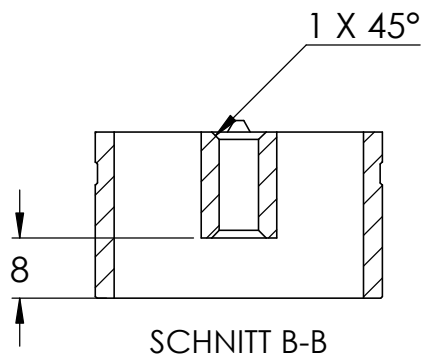


Name	Signatur	Datum	Artikelnummer	Oberfläche: Geschliffen Korn 240
Ch. Höfig	CH	12.11.2020	50602-240	
Werkstoff: 1.4301 (X5CrNi18-10)			Hersteller	Blattformat
			 Feldmann EDELSTAHL-ALUMINIUM-SCHMIEDEISEN	A4
Gewicht 0,355 kg		Massstab: 1:2	Version: 1	Blatt 1 von 4

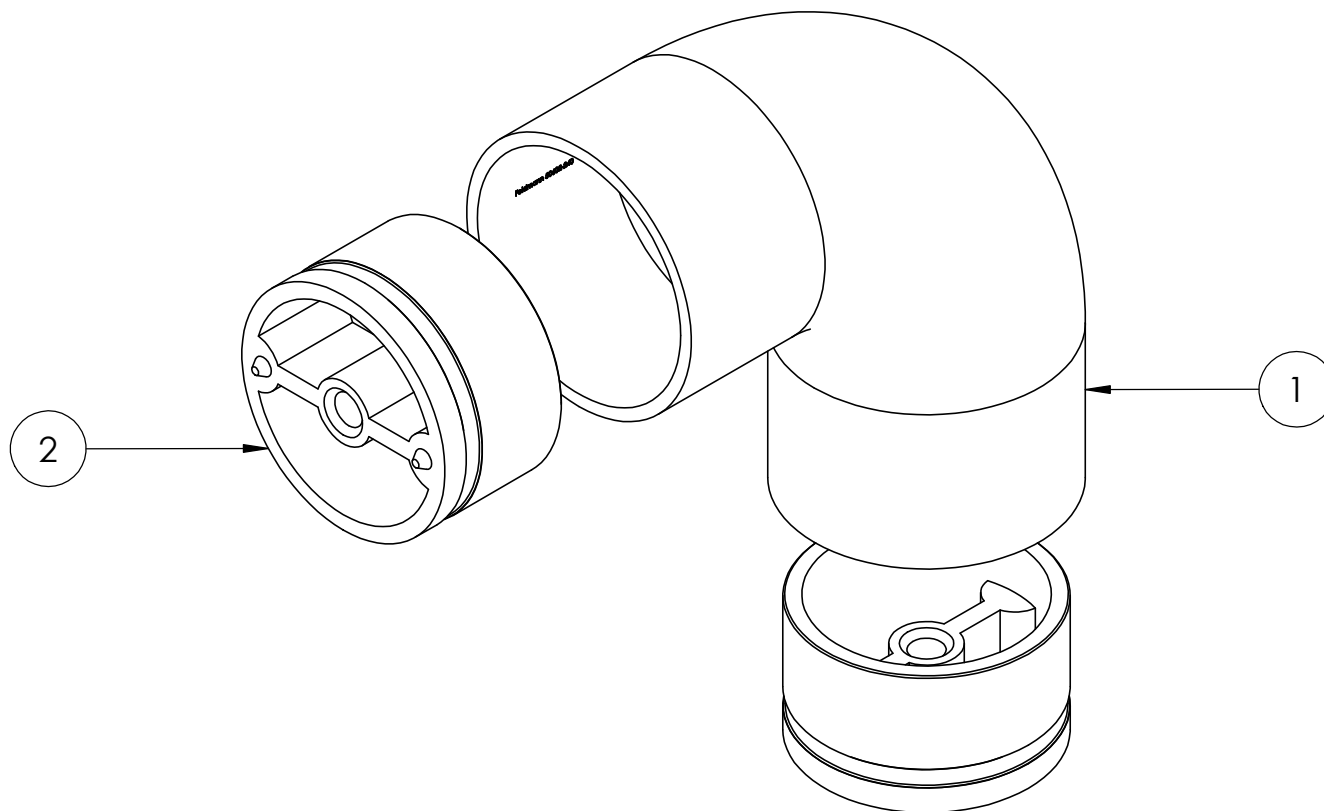


Name	Signatur	Datum	Artikelnummer	Oberfläche: Geschliffen Korn 240
Ch. Höfig	CH	12.11.2020	50602-240 Teil 1	
Werkstoff: 1.4301 (X5CrNi18-10)			Hersteller	Blattformat
			 Feldmann <small>EDELSTAHL-ALUMINIUM-SCHMIEDEISEN</small>	A4
Gewicht 0,224 kg		Massstab: 1:2	Version: 1	Blatt 2 von 4



Name	Signatur	Datum	Artikelnummer	Oberfläche: Roh
Ch. Höfig	CH	12.11.2020	50602-240 Teil2	
Werkstoff: 1.4301 (X5CrNi18-10)			Hersteller	Blattformat
			 Feldmann EDELSTAHL-ALUMINIUM-SCHMIEDEISEN	A4
Gewicht 0,065 kg			Massstab: 1:1	Version: 1
			Blatt 3 von 4	

POS-NR.	BENENNUNG	MENGE
1	50602-240 Teil1	1
2	50602-240 Teil2	2



Name	Signatur	Datum	Artikelnummer	Oberfläche: Geschliffen Korn 240
Ch. Höfig	CH	12.11.2020	50602-240	
Werkstoff: 1.4301 (X5CrNi18-10)		Hersteller		Blattformat
		 Feldmann <small>EDELSTAHL · ALUMINIUM · SCHMIEDEISEN</small>		A4
Gewicht 0,355 kg		Massstab: 1:1	Version: 1	Blatt 4 von 4