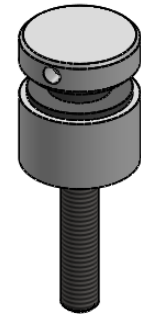
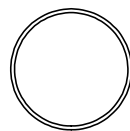
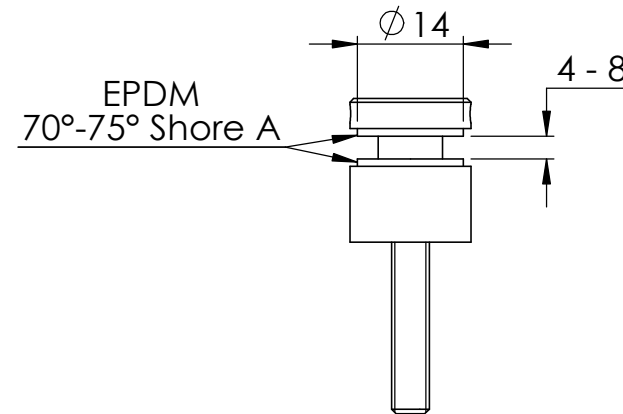
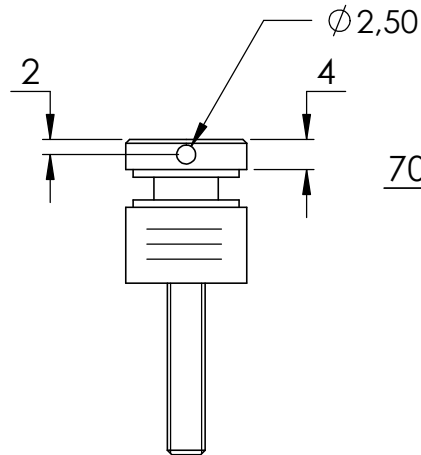
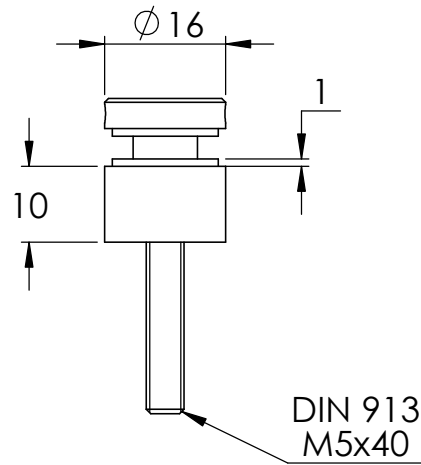
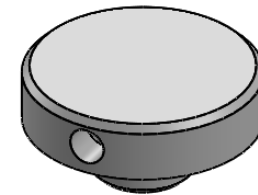
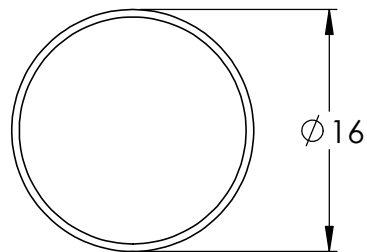
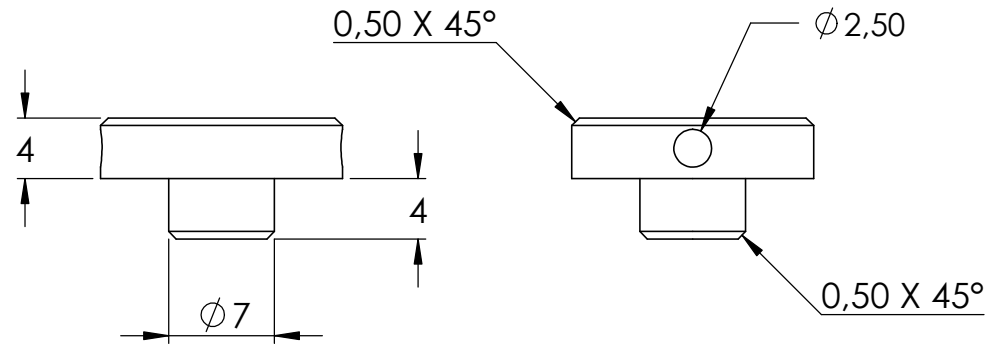
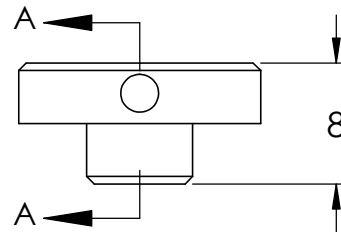
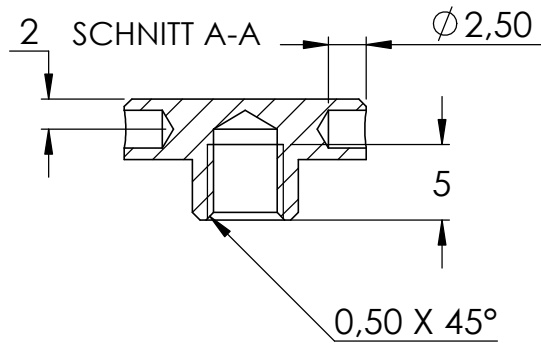
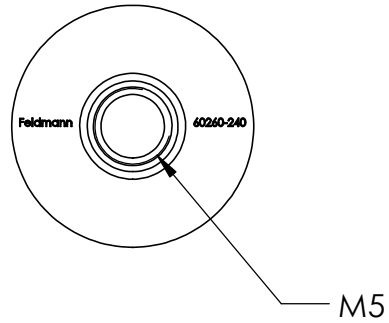


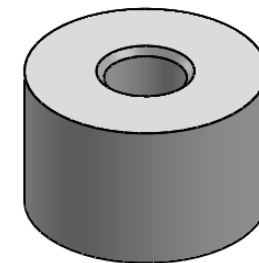
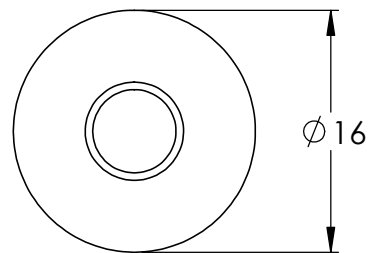
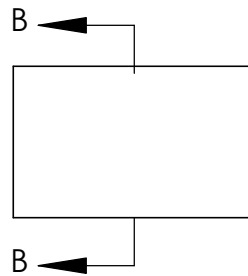
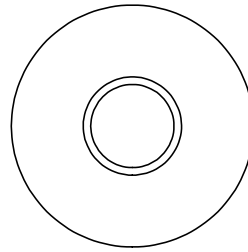
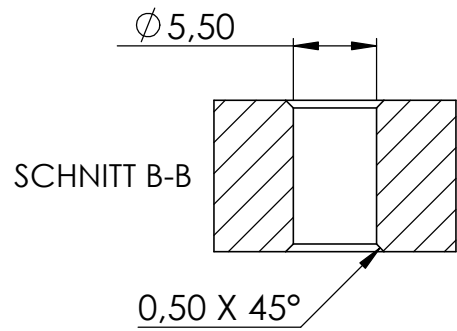
Bohrung für Klemmbereich
mind. \varnothing 9mm



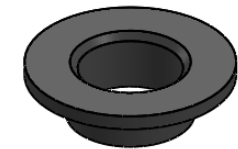
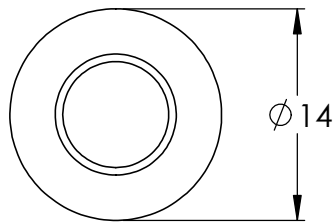
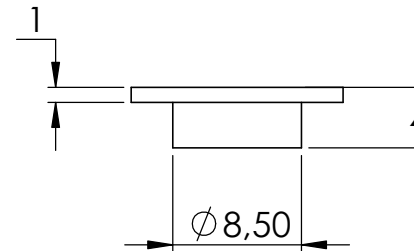
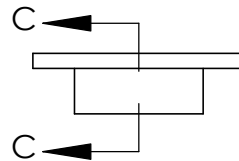
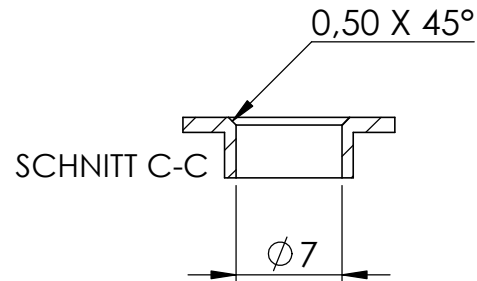
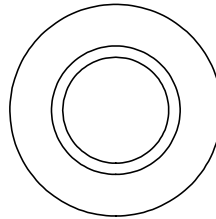
Name	Signatur	Datum	Artikelnummer	Oberfläche: Geschliffen Korn 240
Ch. Höfig	CH	23.02.2022	60260-240	
Werkstoff: 1.4301 (X5CrNi18-10)		Hersteller		Blattformat
		 EDELSTAHL · ALUMINIUM · SCHMIEDEEISEN		A4
Gewicht 0,027 kg	Massstab: 1:1	Version: 1	Blatt 1 von 6	



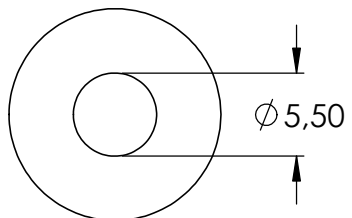
Name	Signatur	Datum	Artikelnummer	Oberfläche: Geschliffen Korn 240
Ch. Höfig	CH	23.02.2022	60260-240 Teil 1	
Werkstoff: 1.4301 (X5CrNi18-10)			Hersteller	Blattformat
			 Feldmann EDELSTAHL · ALUMINIUM · SCHMIEDEISEN	A4
Gewicht 0,007 kg		Massstab: 2:1	Version: 1	Blatt 2 von 6



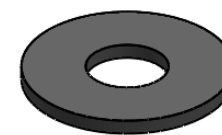
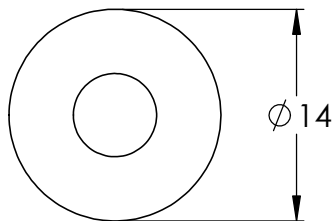
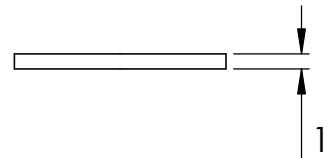
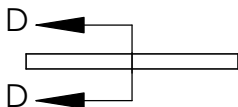
Name	Signatur	Datum	Artikelnummer	Oberfläche: Geschliffen Korn 240
Ch. Höfig	CH	23.02.2022	60260-240 Teil2	
Werkstoff: 1.4301 (X5CrNi18-10)			Hersteller	Blattformat
			 Feldmann EDELSTAHL · ALUMINIUM · SCHMIEDEISEN	A4
Gewicht 0,014 kg		Massstab: 2:1	Version: 1	Blatt 3 von 6



Name	Signatur	Datum	Artikelnummer	Oberfläche: Roh
Ch. Höfig	CH	23.02.2022	60260-240 Teil3	
Werkstoff: EPDM		Hersteller  Feldmann EDELSTAHL · ALUMINIUM · SCHMIEDEISEN		Blattformat A4
Gewicht 0,000 kg		Massstab: 2:1	Version: 1	Blatt 4 von 6

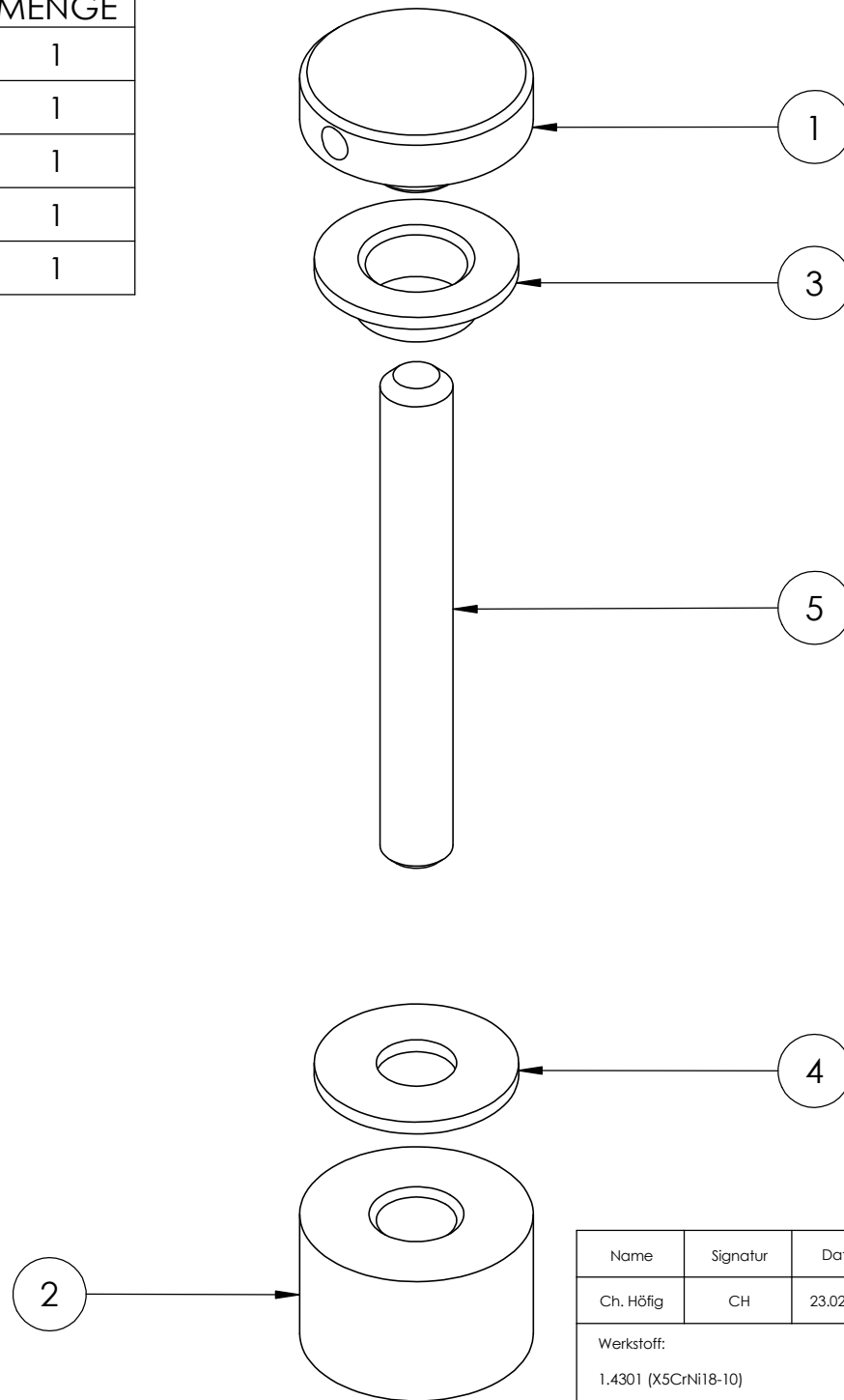



 SCHNITT D-D



Name	Signatur	Datum	Artikelnummer	Oberfläche: Roh
Ch. Höfig	CH	23.02.2022	60260-240 Teil4	
Werkstoff: EPDM			Hersteller	Blattformat
			 Feldmann <small>EDELSTAHL · ALUMINIUM · SCHMIEDEISEN</small>	A4
Gewicht 0,000 kg			Massstab: 2:1	Version: 1
Blatt 5 von 6				

POS-NR.	BENENNUNG	MENGE
1	60260-240 Teil1	1
2	60260-240 Teil2	1
3	60260-240 Teil3	1
4	60260-240 Teil4	1
5	DIN 913 M5x40	1



Name	Signatur	Datum	Artikelnummer	Oberfläche: Geschliffen Korn 240
Ch. Höfig	CH	23.02.2022	60260-240	
Werkstoff: 1.4301 (X5CrNi18-10)			Hersteller	Blattformat
			 Feldmann EDELSTAHL · ALUMINIUM · SCHMIEDEISEN	A4
Gewicht 0,027 kg		Massstab: 2:1	Version: 1	Blatt 6 von 6